

Recombinant Pig F8 protein, His-tagged

Cat. No. F8-1922P Lot. No. (See product label)

SPECIFICATION

Product Overview	Recombinant Pig F8 aa. (Gly1669~Ala1824) fused with N-terminal His tag was produced in E. coli cells.
Species	Pig
Source	E.coli
ProteinLength	Gly1669~Ala1824
Form	Freeze-dried powder
Molecular Mass	18kDa as determined by SDS-PAGE reducing conditions.
Endotoxin	<1.0EU per 1ug (determined by the LAL method)
Purity	>92%
Characteristic	The isoelectric point is 6.4.
Applications	SDS-PAGE; WB; ELISA; IP; CoIP; Purification; Amine Reactive Labeling.
Stability	The thermal stability is described by the loss rate of the target protein. The loss rate was determined by accelerated thermal degradation test, that is, incubate the protein at 37°C for 48h, and no obvious degradation and precipitation were observed. (Referring from China Biological Products Standard, which was calculated by the

 Tel: 1-631-559-9269 1-516-512-3133

 Email: info@creative-biomart.com  Fax: 1-631-938-8127

 45-1 Ramsey Road, Shirley, NY 11967, USA

Arrhenius equation.) The loss of this protein is less than 5% within the expiration date under appropriate storage condition.

Storage

Avoid repeated freeze/thaw cycles. Store at 2-8°C for one month. Aliquot and store at -80°C for 12 months.

Concentration

200µg/mL

Storage Buffer

20mM Tris, 150mM NaCl, pH8.0, containing 1mM EDTA, 1mM DTT, 0.01% sarcosyl, 5% Trehalose and Proclin300.

Reconstitution

Reconstitute in 20mM Tris, 150mM NaCl (pH8.0) to a concentration of 0.1-1.0mg/mL. Do not vortex.

GENE INFORMATION

Gene Name

F8 coagulation factor VIII [*Sus scrofa* (pig)]

Official Symbol

F8

Synonyms

Myh6; myosin heavy chain 6; Myhca; myosin-6; myHC-alpha; myosin heavy chain polypeptide 6 cardiac muscle adult; myosin heavy chain, cardiac muscle alpha isoform; myosin heavy chain, polypeptide 6, cardiac muscle, alpha; myosin, heavy chain 6, cardiac muscle, alpha; myosin, heavy polypeptide 6, cardiac muscle, alpha

Gene ID

397339

mRNA Refseq

NM_214167.2

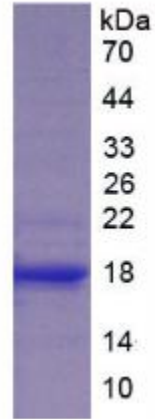
Protein Refseq

NP_999332.2

 Tel: 1-631-559-9269 1-516-512-3133

 Email: info@creative-biomart.com  Fax: 1-631-938-8127

 45-1 Ramsey Road, Shirley, NY 11967, USA



SDS-PAGE

Tel: 1-631-559-9269 1-516-512-3133

Email: info@creative-biomart.com Fax: 1-631-938-8127

45-1 Ramsey Road, Shirley, NY 11967, USA