

Recombinant Human F9 protein, His-KSI-tagged

Cat. No. F9-1299H Lot. No. (See product label)

SPECIFICATION

Product Overview	Recombinant Human F9 protein(P00740)(144-239aa), fused with N-terminal His and KSI tag, was expressed in E.coli.
Species	Human
Source	E.coli
ProteinLength	144-239aa
Form	If the delivery form is liquid, the default storage buffer is Tris/PBS-based buffer, 5%-50% glycerol. If the delivery form is lyophilized powder, the buffer before lyophilization is Tris/PBS-based buffer, 6% Trehalose, pH 8.0.
Molecular Mass	42.0 kDa
Purity	Greater than 85% as determined by SDS-PAGE.
Storage	Store at -20°C/-80°C upon receipt, aliquoting is necessary for mutiple use. Avoid repeated freeze-thaw cycles.
Reconstitution	We recommend that this vial be briefly centrifuged prior to opening to bring the contents to the bottom. Please reconstitute protein in deionized sterile water to a concentration of 0.1-1.0 mg/mL. We recommend to add 5-50% of glycerol (final concentration) and aliquot for long-term storage at -20°C/-80°C.

 Tel: 1-631-559-9269 1-516-512-3133

 Email: info@creative-biomart.com  Fax: 1-631-938-8127

 45-1 Ramsey Road, Shirley, NY 11967, USA

AA Sequence FCKNSADNKVVCCTEGYRLAENQKSCEPAVPFPCGRVSVSQTSLTRAETVFPDV
DYVNSTEAEITLDNITQSTQSFNDFTRVVGGEDAKPGQFP

GENE INFORMATION

Gene Name [F9 coagulation factor IX \[Homo sapiens \]](#)

Official Symbol [F9](#)

Synonyms F9; coagulation factor IX; Christmas disease; Factor IX; FIX; hemophilia B; plasma thromboplastic component; F9 p22; FIX F9; factor 9; factor IX F9; serine protease; Christmas factor; plasma thromboplastin component; P19; PTC; HEMB; THPH8; MGC129641; MGC129642;

Gene ID [2158](#)

mRNA Refseq [NM_000133](#)

Protein Refseq [NP_000124](#)

MIM [300746](#)

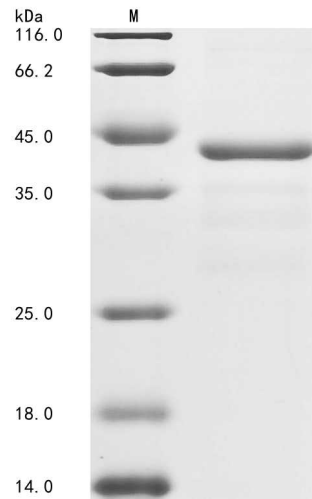
UniProt ID [P00740](#)

 Tel: 1-631-559-9269 1-516-512-3133

 Email: info@creative-biomart.com  Fax: 1-631-938-8127

 45-1 Ramsey Road, Shirley, NY 11967, USA

SDS-PAGE



 Tel: 1-631-559-9269 1-516-512-3133

 Email: info@creative-biomart.com  Fax: 1-631-938-8127

 45-1 Ramsey Road, Shirley, NY 11967, USA