

# Native Human Coagulation Factor IX

**Cat. No.** F9-671H    **Lot. No.** (See product label)

## SPECIFICATION

<b>Product Overview</b>	NativeHuman F9 is prepared from fresh frozen plasma by a combination of conventional procedures and immunoaffinity chromatography.
<b>Species</b>	Human
<b>Source</b>	Human Plasma
<b>Description</b>	Human F9, activated by either the Contact or Tissue Factor Pathway, is responsible for the activation of Factor X to Xa.
<b>Form</b>	Frozen liquid in 0.02 M Tris-HCl Buffer + 0.1 M NaCl + 0.001 M Benzamidine, pH 7.4.
<b>Biological Activity</b>	Activity is determined via clotting assay.
<b>Endotoxin Level</b>	< 0.1 ng/ug of protein.
<b>Concentration</b>	5.0 mg/ml
<b>Molecular Weight</b>	56 kDa
<b>Storage</b>	Store at -80°C. Stable for 3 years from delivery. Avoid repeated freeze-thaw cycles.
<b>Pathways</b>	Blood Clotting Cascade; Complement and Coagulation Cascades; Extrinsic Pathway; Formation of Fibrin Clot (Clotting Cascade); Gamma-carboxylation of protein precursors; Gamma-carboxylation, transport, and amino-terminal cleavage of proteins;

 Tel: 1-631-559-9269    1-516-512-3133

 Email: [info@creative-biomart.com](mailto:info@creative-biomart.com)     Fax: 1-631-938-8127

 45-1 Ramsey Road, Shirley, NY 11967, USA

Hemostasis; IntrinsicPathway; Metabolism of proteins; Post-translational protein modification;Removal of aminoterminal propeptides from gamma-carboxylation proteins

## GENE INFORMATION

**Gene Name** [F9 coagulation factor IX \[ Homo sapiens\]](#)

**Official Symbol** [F9](#)

**Synonyms** F9; coagulation factor IX;FIX;P19; PTC; HEMB; MGC129641; MGC129642; F9p22; factor9; factor IX F9; serine protease; Christmas factor; OTTHUMP00000024154;plasma thromboplastic component; EC 3.4.21.22; EC 3.4.21; Coagulation factorIX; Plasma thromboplastic component; Coagulation factor IX light chain; Coagulationfactor IX heavy chain; Factor IX; hemophilia B

**Gene ID** [2158](#)

**mRNA Refseq** [NM\\_000133](#)

**Protein Refseq** [NP\\_000124](#)

**MIM** [300746](#)

**UniProt ID** [P00740](#)

**Chromosome Location** Xq27.1-q27.2

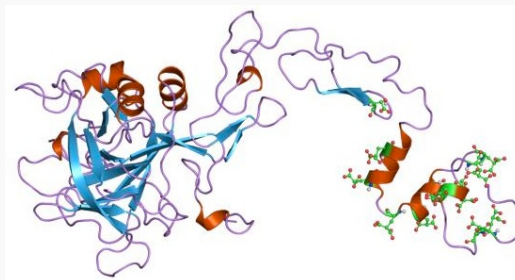
**Function** peptidase activity; calciumion binding; serine-typeendopeptidase activity

 Tel: 1-631-559-9269 1-516-512-3133

 Email: [info@creative-biomart.com](mailto:info@creative-biomart.com)  Fax: 1-631-938-8127


 45-1 Ramsey Road, Shirley, NY 11967, USA

**PDB rendering  
based on 1pfs.**



 Tel: 1-631-559-9269 1-516-512-3133

 Email: [info@creative-biomart.com](mailto:info@creative-biomart.com)  Fax: 1-631-938-8127

 45-1 Ramsey Road, Shirley, NY 11967, USA