

Recombinant Human FAAH Protein, His-tagged

Cat. No. FAAH-057H Lot. No. (See product label)

SPECIFICATION

Product Overview	Recombinant human C-terminal His-tagged FAAH protein was expressed in Sf21 cells.
Species	Human
Source	Insect Cells
Description	This gene encodes a protein that is responsible for the hydrolysis of a number of primary and secondary fatty acid amides, including the neuromodulatory compounds anandamide and oleamide.
Molecular Mass	64.3 kDa
Purity	Cell Lysate: Resuspended 100000 g pellet
Unit Definition	One unit is defined as the amount of enzyme required to produce 1 pmole of AMC per minute in 50 mM Tris, pH 9.0, 1 mM EDTA and 20 μ M AMC Arachidonyl Amide (AMCAA) at 37 centigrade.
Applications	WB
Stability	\geq 9 months
Storage	At -80 centigrade.

 Tel: 1-631-559-9269 1-516-512-3133

 Email: info@creative-biomart.com  Fax: 1-631-938-8127

 45-1 Ramsey Road, Shirley, NY 11967, USA

GENE INFORMATION

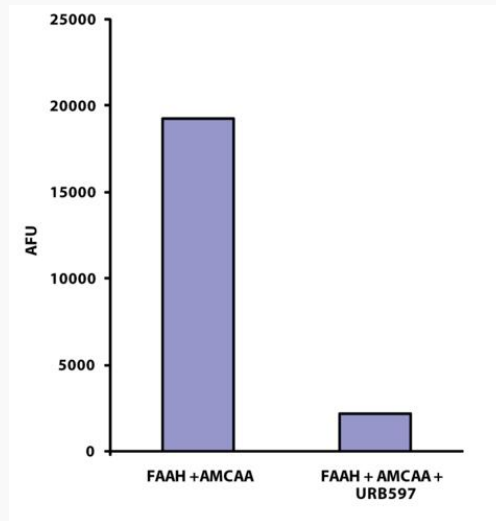
Gene Name	FAAH fatty acid amide hydrolase [Homo sapiens (human)]
Official Symbol	FAAH
Synonyms	FAAH; fatty acid amide hydrolase; PSAB; FAAH-1; fatty-acid amide hydrolase 1; anandamide amidohydrolase 1; fatty acid ester hydrolase; oleamide hydrolase 1; EC 3.5.1.99
Gene ID	2166
mRNA Refseq	NM_001441
Protein Refseq	NP_001432
MIM	602935
UniProt ID	O00519

 Tel: 1-631-559-9269 1-516-512-3133

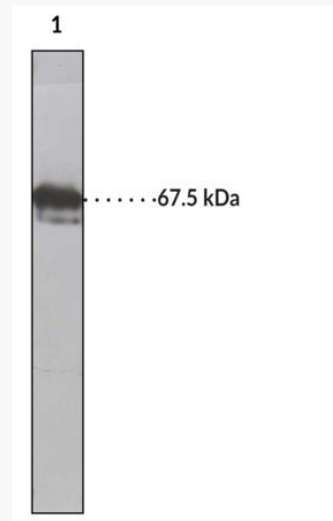
 Email: info@creative-biomart.com  Fax: 1-631-938-8127

 45-1 Ramsey Road, Shirley, NY 11967, USA

**Inhibition of FAAH
by URB597**



**WB of FAAH (human,
recombinant) probed
using FAAH
Polyclonal Antibody.**



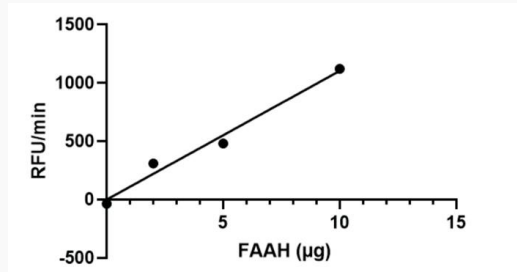
Lane 1: FAAH 100000xg supernatant

 Tel: 1-631-559-9269 1-516-512-3133

 Email: info@creative-biomart.com  Fax: 1-631-938-8127

 45-1 Ramsey Road, Shirley, NY 11967, USA

Activity of FAAH



FAAH activity was determined using Fatty Acid Amide Hydrolase Inhibitor Screening Assay Kit with 20 µM of AMC Arachidonyl Amide.

Tel: 1-631-559-9269 1-516-512-3133

Email: info@creative-biomart.com Fax: 1-631-938-8127

45-1 Ramsey Road, Shirley, NY 11967, USA