

## Recombinant Cattle FABP2 protein, His & T7-tagged

Cat. No. FABP2-2805C Lot. No. (See product label)

### SPECIFICATION

<b>Product Overview</b>	Recombinant Cattle FABP2 aa. (Ala2~Ile128 (Accession # Q56JX9)) fused with N-terminal His & T7 tag was produced in E. coli cells.
<b>Species</b>	Cattle
<b>Source</b>	E.coli
<b>ProteinLength</b>	Ala2~Ile128
<b>Form</b>	Freeze-dried powder
<b>Molecular Mass</b>	Predicted Molecular Mass: 18.1kDa
<b>Endotoxin</b>	<1.0EU per 1g (determined by the LAL method)
<b>Purity</b>	>95%
<b>Characteristic</b>	The isoelectric point is 5.9.
<b>Applications</b>	SDS-PAGE; WB; ELISA; IP.
<b>Stability</b>	The thermal stability is described by the loss rate. The loss rate was determined by accelerated thermal degradation test, that is, incubate the protein at 37°C for 48h, and no obvious degradation and precipitation were observed. The loss rate is less than 5% within the expiration date under appropriate storage condition.

 Tel: 1-631-559-9269 1-516-512-3133

 Email: [info@creative-biomart.com](mailto:info@creative-biomart.com)  Fax: 1-631-938-8127

 45-1 Ramsey Road, Shirley, NY 11967, USA

**Storage** Avoid repeated freeze/thaw cycles. Store at 2-8°C for one month. Aliquot and store at -80°C for 12 months.

**Storage buffer** Supplied as lyophilized form in 20mM Tris, 150mM NaCl, pH8.0, containing 1mM EDTA, 1mM DTT, 0.01% sarcosyl, 5% trehalose, and preservative.

**Reconstitution** Reconstitute in sterile ddH<sub>2</sub>O.

## GENE INFORMATION

**Gene Name** FABP2 fatty acid binding protein 2, intestinal [ Bos taurus (cattle) ]

**Official Symbol** FABP2

**Synonyms** FABPI; I-FABP; fatty acid-binding protein 2; intestinal-type fatty acid-binding protein; fatty acid-binding protein, intestinal

**Gene ID** 515768

**mRNA Refseq** NM\_001025332.1

**Protein Refseq** NP\_001020503.1

**UniProt ID** Q56JX9

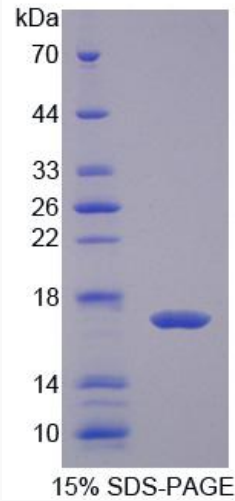
 Tel: 1-631-559-9269 1-516-512-3133

 Email: [info@creative-biomart.com](mailto:info@creative-biomart.com)  Fax: 1-631-938-8127

 45-1 Ramsey Road, Shirley, NY 11967, USA



SDS-PAGE



Tel: 1-631-559-9269 1-516-512-3133

Email: [info@creative-biomart.com](mailto:info@creative-biomart.com) Fax: 1-631-938-8127

45-1 Ramsey Road, Shirley, NY 11967, USA