

## Recombinant Pig FABP6 Protein, His-tagged

**Cat. No.** FABP6-484P    **Lot. No.** (See product label)

### SPECIFICATION

<b>Product Overview</b>	Recombinant Pig FABP6(Met1~Ala128) fused with His tag at N-terminal was expressed in E. coli.
<b>Species</b>	Pig
<b>Source</b>	E.coli
<b>ProteinLength</b>	Met1~Ala128
<b>Description</b>	FABP6 played an important role in many functions.
<b>Form</b>	PBS, pH7.4, containing 0.01% SKL, 1mM DTT, 5% Trehalose and Proclin300.
<b>Molecular Mass</b>	17.9kDa
<b>Identity</b>	Reconstitute in PBS or others
<b>Endotoxin</b>	<1.0EU per 1g (determined by the LAL method)
<b>Purity</b>	> 95%
<b>Applications</b>	Positive Control; Immunogen; SDS-PAGE; WB. If bio-activity of the protein is needed, please check active protein
<b>Stability</b>	The thermal stability is described by the loss rate. The loss rate was determined by

 Tel: 1-631-559-9269    1-516-512-3133

 Email: [info@creative-biomart.com](mailto:info@creative-biomart.com)     Fax: 1-631-938-8127

 45-1 Ramsey Road, Shirley, NY 11967, USA

accelerated thermal degradation test, that is, incubate the protein at 37 centigrade for 48h, and no obvious degradation and precipitation were observed. The loss rate is less than 5% within the expiration date under appropriate storage condition.

**Storage**

Avoid repeated freeze/thaw cycles. Store at 2-8 centigrade for one month. Aliquot and store at -80 centigrade for 12 months.

**Reconstitution**

Reconstitute in PBS or others

## GENE INFORMATION

**Gene Name**

FABP6 fatty acid binding protein 6, ileal [ *Sus scrofa* ]

**Official Symbol**

FABP6

**Synonyms**

FABP6; fatty acid binding protein 6, ileal; gastrotropin; porcine ileal peptide; ileal lipid-binding protein; fatty acid-binding protein 6; fatty acid binding protein 6, ileal (gastrotropin); GT; PIP; ILBP; ILLBP;

**Gene ID**

397423

**mRNA Refseq**

NM\_214215

**Protein Refseq**

NP\_999380

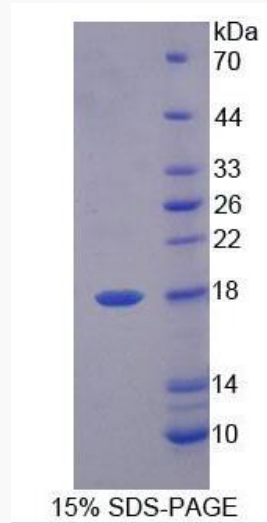
**UniProt ID**

P10289

 Tel: 1-631-559-9269 1-516-512-3133

 Email: [info@creative-biomart.com](mailto:info@creative-biomart.com)  Fax: 1-631-938-8127

 45-1 Ramsey Road, Shirley, NY 11967, USA



 Tel: 1-631-559-9269 1-516-512-3133

 Email: [info@creative-biomart.com](mailto:info@creative-biomart.com)  Fax: 1-631-938-8127

 45-1 Ramsey Road, Shirley, NY 11967, USA