

Recombinant Human FADS1 Protein, His-tagged

Cat. No. FADS1-17H **Lot. No.** (See product label)

SPECIFICATION

Product Overview	Recombinant human FADS1 protein (2-121) with a N-terminal His-tag was expressed in <i>E. coli</i> .
Species	Human
Source	<i>E. coli</i>
ProteinLength	2-121
Description	The protein encoded by this gene is a member of the fatty acid desaturase (FADS) gene family. Desaturase enzymes regulate unsaturation of fatty acids through the introduction of double bonds between defined carbons of the fatty acyl chain. FADS family members are considered fusion products composed of an N-terminal cytochrome b5-like domain and a C-terminal multiple membrane-spanning desaturase portion, both of which are characterized by conserved histidine motifs. This gene is clustered with family members FADS1 and FADS2 at 11q12-q13.1; this cluster is thought to have arisen evolutionarily from gene duplication based on its similar exon/intron organization.
Form	50 mM HEPES, pH 8.0, with 150 mM sodium chloride and 10% glycerol
Molecular Mass	15.89 kDa
Purity	≥80% estimated by SDS-PAGE

 Tel: 1-631-559-9269 1-516-512-3133

 Email: info@creative-biomart.com  Fax: 1-631-938-8127

 45-1 Ramsey Road, Shirley, NY 11967, USA

Applications	WB
Stability	≥ 1 year
Storage	Store at -80 centigrade

GENE INFORMATION

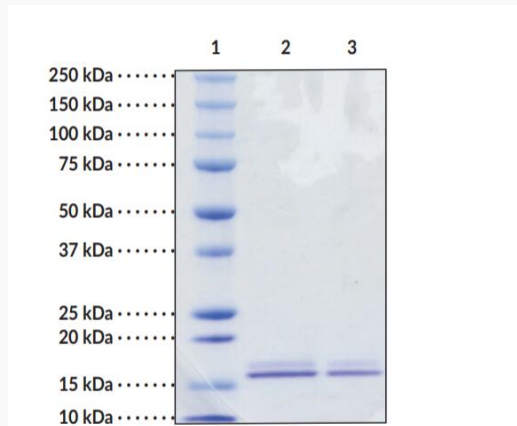
Gene Name	FADS1 fatty acid desaturase 1 [Homo sapiens (human)]
Official Symbol	FADS1
Synonyms	FADS1; fatty acid desaturase 1; D5D; TU12; FADS6; FADSD5; LLCDL1; acyl-CoA (8-3)-desaturase; delta(5) desaturase; delta-5 fatty acid desaturase; linoleoyl-CoA desaturase (delta-6-desaturase)-like 1
Gene ID	3992
mRNA Refseq	NM_013402
Protein Refseq	NP_037534
MIM	606148
UniProt ID	O60427

 Tel: 1-631-559-9269 1-516-512-3133

 Email: info@creative-biomart.com  Fax: 1-631-938-8127

 45-1 Ramsey Road, Shirley, NY 11967, USA

SDS-PAGE of FADS1



Lane 1: MW Markers, Lane 2: FADS1 (4 g), Lane 3: FADS1 (2 g). Representative gel image shown; actual purity may vary between each batch.

 Tel: 1-631-559-9269 1-516-512-3133

 Email: info@creative-biomart.com  Fax: 1-631-938-8127

 45-1 Ramsey Road, Shirley, NY 11967, USA