

Recombinant Human FADS2 Protein, His-tagged

Cat. No. FADS2-16H Lot. No. (See product label)

SPECIFICATION

Product Overview	Recombinant human FADS2 protein (2-131) with a N-terminal His-tag was expressed in E. coli.
Species	Human
Source	E.coli
ProteinLength	2-131
Description	The protein encoded by this gene is a member of the fatty acid desaturase (FADS) gene family. Desaturase enzymes regulate unsaturation of fatty acids through the introduction of double bonds between defined carbons of the fatty acyl chain. FADS family members are considered fusion products composed of an N-terminal cytochrome b5-like domain and a C-terminal multiple membrane-spanning desaturase portion, both of which are characterized by conserved histidine motifs. This gene is clustered with family members at 11q12-q13.1; this cluster is thought to have arisen evolutionarily from gene duplication based on its similar exon/intron organization. Alternative splicing results in multiple transcript variants encoding different isoforms.
Form	50 mM HEPES, pH 8.0, with 150 mM sodium chloride and 10% glycerol
Molecular Mass	16.99 kDa
Purity	≥95% estimated by SDS-PAGE

 Tel: 1-631-559-9269 1-516-512-3133

 Email: info@creative-biomart.com  Fax: 1-631-938-8127

 45-1 Ramsey Road, Shirley, NY 11967, USA

Applications	IP, WB
Stability	≥ 1 year
Storage	Store at -80 centigrade

GENE INFORMATION

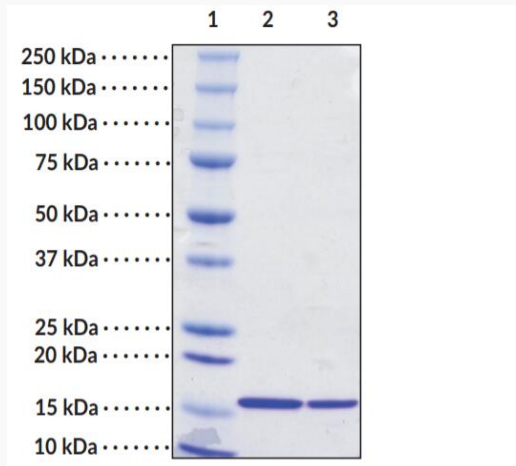
Gene Name	FADS2 fatty acid desaturase 2 [Homo sapiens (human)]
Official Symbol	FADS2
Synonyms	FADS2; fatty acid desaturase 2; D6D; DES6; TU13; FADSD6; LLCDL2; SLL0262; acyl-CoA 6-desaturase; delta-6 fatty acid desaturase; delta-6-desaturase; linoleoyl-CoA desaturase (delta-6-desaturase)-like 2
Gene ID	9415
mRNA Refseq	NM_001281501
Protein Refseq	NP_001268430
MIM	606149
UniProt ID	O95864

 Tel: 1-631-559-9269 1-516-512-3133

 Email: info@creative-biomart.com  Fax: 1-631-938-8127

 45-1 Ramsey Road, Shirley, NY 11967, USA

SDS-PAGE of FADS2



Lane 1: MW Markers, Lane 2: FADS2 (4 g), Lane 3: FADS2 (2 g). Representative gel image shown; actual purity may vary between each batch.

 Tel: 1-631-559-9269 1-516-512-3133

 Email: info@creative-biomart.com  Fax: 1-631-938-8127

 45-1 Ramsey Road, Shirley, NY 11967, USA