

Recombinant Full Length Human FAF1 Protein, C-Flag-tagged

Cat. No. FAF1-1364HFL **Lot. No.** (See product label)

SPECIFICATION

Product Overview	Recombinant Full Length Human FAF1 Protein, fused to Flag-tag at C-terminus, was expressed in Mammalian cells.
Species	Human
Source	Mammalian Cells
Description	Interaction of Fas ligand (TNFSF6) with the FAS antigen (TNFRSF6) mediates programmed cell death, also called apoptosis, in a number of organ systems. The protein encoded by this gene binds to FAS antigen and can initiate apoptosis or enhance apoptosis initiated through FAS antigen. Initiation of apoptosis by the protein encoded by this gene requires a ubiquitin-like domain but not the FAS-binding domain.
Form	25 mM Tris HCl, pH 7.3, 100 mM glycine, 10% glycerol.
Molecular Mass	73.8 kDa
AA Sequence	MASNMDREMILADFQACTGIENIDEAITLLEQNNWDLVAAINGVIPQENGILQSEYGG ETIPGPAFNPAS HPASAPTSSSSSAFRPVMPSRQIVERQPRMLDFRVEYRDRNVDV VLEDTCTVGEIKQILENELQIPVSKM LLKGWKTGDVEDSTVLKSLHLPKNNSLYVLT DLPPPSSSSSHAGALQESLNQNFMLIITHREVQREYNLN FSGSSTIQEVKRNVDLTSI PVRHQLWEGWPTSATDDSMCLAESGLSYPCHRLTVGRRSSPAQTREQSEE QITDV HMVSDSDGDDFEDATEFGVDDGEVFGMASSALRKSPMMPENAENEGDALLQFTAE FSSRYGDCHP VFFIGSLEAAFQEAIFYVKARDRKLAIYLHHDSESVLTVNFCSQMLCA

 Tel: 1-631-559-9269 1-516-512-3133

 Email: info@creative-biomart.com  Fax: 1-631-938-8127

 45-1 Ramsey Road, Shirley, NY 11967, USA

ESIVSYLSQNFITWAWDLTKDSN RARFLTMCNRHFGSVVAQTIRTQKTDQFPLFLIIM
 GKRSSNEVLNVIQGNTTVDELMMRLMAAMEIFTAQ QQEDIKDEDEREARENVKRE
 QDEAYRLSLEADRAKREAHHEREMAEQFRLEQIRKEQEEEREAIRLSLEQA LPPEPK
 EENAEPVSKLRIRTPSGEFLERRFLASNKLQIVDFVASKGFPWDEYKLLSTFPRRDV
 TQLDPN
 KSLLEVKLFQETLFLKAKETRTRPLEQKLISEEDLAANDILDYKDDDDKV

Purity	> 80% as determined by SDS-PAGE and Coomassie blue staining.
Stability	Stable for 12 months from the date of receipt of the product under proper storage and handling conditions. Avoid repeated freeze-thaw cycles.
Storage	Store at -80 centigrade.
Concentration	>50 ug/mL as determined by microplate BCA method.
Preparation	Recombinant protein was captured through anti-DDK affinity column followed by conventional chromatography steps.
Protein Families	Druggable Genome
Full Length	Full L.

GENE INFORMATION

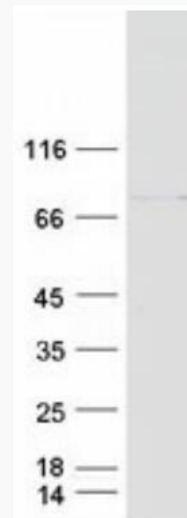
Gene Name	FAF1 Fas associated factor 1 [Homo sapiens (human)]
Official Symbol	FAF1
Synonyms	hFAF1; CGI-03; HFAF1s; UBXD12; UBXN3A

 Tel: 1-631-559-9269 1-516-512-3133

 Email: info@creative-biomart.com  Fax: 1-631-938-8127

 45-1 Ramsey Road, Shirley, NY 11967, USA

Gene ID	11124
mRNA Refseq	NM_007051.3
Protein Refseq	NP_008982.1
MIM	604460
UniProt ID	Q9UNN5



Coomassie blue staining of purified FAF1 protein.

 Tel: 1-631-559-9269 1-516-512-3133

 Email: info@creative-biomart.com  Fax: 1-631-938-8127

 45-1 Ramsey Road, Shirley, NY 11967, USA