

## Recombinant Human FAF1 Protein, GST-tagged

**Cat. No.** FAF1-3647H    **Lot. No.** (See product label)

### SPECIFICATION

<b>Product Overview</b>	Human FAF1 full-length ORF ( AAH04970, 1 a.a. - 650 a.a.) recombinant protein with GST-tag at N-terminal.
<b>Species</b>	Human
<b>Source</b>	Wheat Germ
<b>Description</b>	Interaction of Fas ligand (TNFSF6) with the FAS antigen (TNFRSF6) mediates programmed cell death, also called apoptosis, in a number of organ systems. The protein encoded by this gene binds to FAS antigen and can initiate apoptosis or enhance apoptosis initiated through FAS antigen. Initiation of apoptosis by the protein encoded by this gene requires a ubiquitin-like domain but not the FAS-binding domain. [provided by RefSeq, Jul 2008]
<b>Molecular Mass</b>	97.02 kDa
<b>AA Sequence</b>	MASNMDREMILADFQACTGIENIDEAITLLEQNNWDLVAAINGVIPQENGILQSEYGG ETIPGPAFNPASHPASAPTSSSSSAFRPVMPSRQIVERQPRMLDFRVEYRDRNVDV VLEDTCTVGEIKQILENELQIPVSKMLLKGWKTGDVEDSTVLKSLHLPKNNSLYVLT DLPPSSSSSHAGALQESLNQNFMLIITHREVQREYNLNFSGSSTIQEVKRNVDLTSI PVRHQLWEGWPTSATDGSMLAESGLSYPCHRLTVGRRSSPAQTREQSEEQITDV HMVSDSDGDDFEDATEFGVDDGEVFGMASSALRKSPMMPENAENEGDALLQFTAE FSSRYGDCHPVFFIGSLEAAFQEAIFYVKARDRKLAIYLHHDESVLTNVFCSQMLCA ESIVSYLSQNFITWAWDLTKDSNRARFLMCMNRHFGSVVAQTIRTQKTDQFPLFIIM

 Tel: 1-631-559-9269    1-516-512-3133

 Email: [info@creative-biomart.com](mailto:info@creative-biomart.com)     Fax: 1-631-938-8127

 45-1 Ramsey Road, Shirley, NY 11967, USA

GKRSSNEVLNVIQGNTTVDELMMRLMAAMEIFTAQQQEDIKDEDEREARENVKREQ  
 DEAYRLSLEADRAKREAHEREMAEQFRLEQIRKEQEEEREAIRLSLEQALPPEPKEE  
 NAEPVSKLRIRTPSGEFLERRFLASNKLQIVDFVASKGFPWDEYKLLSTFPRRDVT  
 QLDPNKSLLEVKLFPQETLFLEAKE

<b>Applications</b>	Enzyme-linked Immunoabsorbent Assay Western Blot (Recombinant protein) Antibody Production Protein Array
<b>Notes</b>	Best use within three months from the date of receipt of this protein.
<b>Storage</b>	Store at -80 centigrade. Aliquot to avoid repeated freezing and thawing.
<b>Storage Buffer</b>	50 mM Tris-HCl, 10 mM reduced Glutathione, pH=8.0 in the elution buffer.

## GENE INFORMATION

<b>Gene Name</b>	FAF1 Fas (TNFRSF6) associated factor 1 [ Homo sapiens ]
<b>Official Symbol</b>	FAF1
<b>Synonyms</b>	FAF1; Fas (TNFRSF6) associated factor 1; FAS-associated factor 1; CGI 03; hFAF1; HFAF1s; TNFRSF6 associated factor 1; UBX domain protein 3A; UBXD12; UBXN3A; TNFRSF6-associated factor 1; UBX domain-containing protein 12; UBX domain-containing protein 3A; CGI-03; FLJ37524;
<b>Gene ID</b>	11124
<b>mRNA Refseq</b>	NM_007051

 Tel: 1-631-559-9269 1-516-512-3133

 Email: [info@creative-biomart.com](mailto:info@creative-biomart.com)  Fax: 1-631-938-8127

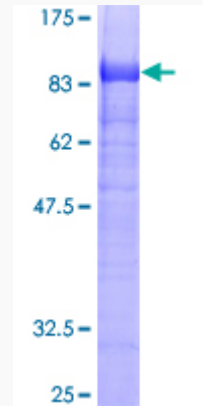
 45-1 Ramsey Road, Shirley, NY 11967, USA

**Protein Refseq** NP\_008982

**MIM** 604460

**UniProt ID** Q9UNN5

**Quality Control  
Testing**



12.5% SDS-PAGE Stained with Coomassie Blue.

 Tel: 1-631-559-9269 1-516-512-3133

 Email: [info@creative-biomart.com](mailto:info@creative-biomart.com)  Fax: 1-631-938-8127

 45-1 Ramsey Road, Shirley, NY 11967, USA