

## Recombinant Human FAHD1 Protein, GST-tagged

Cat. No. FAHD1-3651H Lot. No. (See product label)

### SPECIFICATION

<b>Product Overview</b>	Human FAHD1 full-length ORF ( AAH20615.1, 1 a.a. - 47 a.a.) recombinant protein with GST-tag at N-terminal.
<b>Species</b>	Human
<b>Source</b>	Wheat Germ
<b>Description</b>	FAHD1 (Fumarylacetoacetate Hydrolase Domain Containing 1) is a Protein Coding gene. Among its related pathways are Tyrosine metabolism and Metabolism. GO annotations related to this gene include oxaloacetate decarboxylase activity and fumarylpyruvate hydrolase activity. An important paralog of this gene is FAHD2A.
<b>Molecular Mass</b>	32.1 kDa
<b>AA Sequence</b>	MFQITFRCLPNFLRFGHHQEAFVKIKISTNYWPISDLLNQFDRINLQ
<b>Applications</b>	Enzyme-linked Immunoabsorbent Assay Western Blot (Recombinant protein) Antibody Production Protein Array
<b>Notes</b>	Best use within three months from the date of receipt of this protein.
<b>Storage</b>	Store at -80 centigrade. Aliquot to avoid repeated freezing and thawing.

 Tel: 1-631-559-9269 1-516-512-3133

 Email: [info@creative-biomart.com](mailto:info@creative-biomart.com)  Fax: 1-631-938-8127

 45-1 Ramsey Road, Shirley, NY 11967, USA

**Storage Buffer** 50 mM Tris-HCl, 10 mM reduced Glutathione, pH=8.0 in the elution buffer.

## GENE INFORMATION

**Gene Name** [FAHD1 fumarylacetoacetate hydrolase domain containing 1 \[ Homo sapiens \]](#)

**Official Symbol** [FAHD1](#)

**Synonyms** FAHD1; fumarylacetoacetate hydrolase domain containing 1; C16orf36, chromosome 16 open reading frame 36; acylpyruvase FAHD1, mitochondrial; DKFZP566J2046; YISK like/RJD15; yisK-like protein; fumarylacetoacetate hydrolase domain-containing protein 1; YISKL; C16orf36; MGC74876; DKFZp566J2046;

**Gene ID** [81889](#)

**mRNA Refseq** [NM\\_001018104](#)

**Protein Refseq** [NP\\_001018114](#)

**MIM** [616320](#)

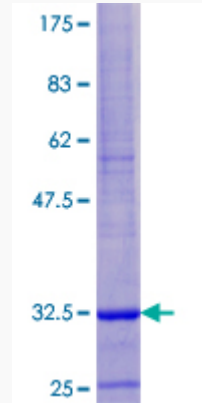
**UniProt ID** [Q6P587](#)

 Tel: 1-631-559-9269 1-516-512-3133

 Email: [info@creative-biomart.com](mailto:info@creative-biomart.com)  Fax: 1-631-938-8127

 45-1 Ramsey Road, Shirley, NY 11967, USA

**Quality Control  
Testing**



12.5% SDS-PAGE Stained with Coomassie Blue.

 Tel: 1-631-559-9269 1-516-512-3133

 Email: [info@creative-biomart.com](mailto:info@creative-biomart.com)  Fax: 1-631-938-8127

 45-1 Ramsey Road, Shirley, NY 11967, USA