

## Recombinant Human FAIM Protein, GST-tagged

**Cat. No.** FAIM-3654H    **Lot. No.** (See product label)

### SPECIFICATION

<b>Product Overview</b>	Human FAIM full-length ORF ( NP_060617.1, 1 a.a. - 179 a.a.) recombinant protein with GST-tag at N-terminal.
<b>Species</b>	Human
<b>Source</b>	Wheat Germ
<b>Description</b>	The protein encoded by this gene protects against death receptor-triggered apoptosis and regulates B-cell signaling and differentiation. Several transcript variants encoding different isoforms have been found for this gene. [provided by RefSeq, Jul 2011]
<b>Molecular Mass</b>	46.6 kDa
<b>AA Sequence</b>	MTDLVAVWDVALSDGVHKIEFEHGTTSGKRVVYVDGKEEIRKEWMFKLVGKETFYV GAAKTKATINIDAISGFAYEYTLINGKSLKKYMEDRSKTTNTWVLHMDGENFRIVLE KDAMDVWCNGKKLETAGEFVDDGTETHFSIGNHDCYIKAVSSGKRKEGIIHTLIVDN REIPEIAS
<b>Applications</b>	Enzyme-linked Immunoabsorbent Assay Western Blot (Recombinant protein) Antibody Production Protein Array
<b>Notes</b>	Best use within three months from the date of receipt of this protein.

 Tel: 1-631-559-9269    1-516-512-3133

 Email: [info@creative-biomart.com](mailto:info@creative-biomart.com)     Fax: 1-631-938-8127

 45-1 Ramsey Road, Shirley, NY 11967, USA

**Storage** Store at -80 centigrade. Aliquot to avoid repeated freezing and thawing.

**Storage Buffer** 50 mM Tris-HCl, 10 mM reduced Glutathione, pH=8.0 in the elution buffer.

## GENE INFORMATION

**Gene Name** FAIM Fas apoptotic inhibitory molecule [ Homo sapiens ]

**Official Symbol** FAIM

**Synonyms** FAIM; Fas apoptotic inhibitory molecule; fas apoptotic inhibitory molecule 1; FAIM1; FLJ10582;

**Gene ID** 55179

**mRNA Refseq** NM\_001033030

**Protein Refseq** NP\_001028202

**MIM** 617535

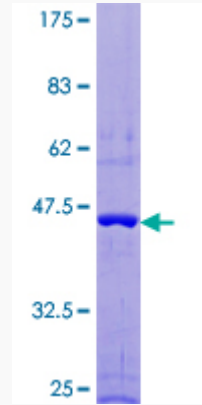
**UniProt ID** Q9NVQ4

 Tel: 1-631-559-9269 1-516-512-3133

 Email: [info@creative-biomart.com](mailto:info@creative-biomart.com)  Fax: 1-631-938-8127

 45-1 Ramsey Road, Shirley, NY 11967, USA

**Quality Control  
Testing**



12.5% SDS-PAGE Stained with Coomassie Blue.

 Tel: 1-631-559-9269 1-516-512-3133

 Email: [info@creative-biomart.com](mailto:info@creative-biomart.com)  Fax: 1-631-938-8127

 45-1 Ramsey Road, Shirley, NY 11967, USA