

Recombinant Human FAM105A Protein, GST-tagged

Cat. No. FAM105A-4232H Lot. No. (See product label)

SPECIFICATION

Product Overview	Human FLJ11127 full-length ORF (AAH11524, 1 a.a. - 356 a.a.) recombinant protein with GST-tag at N-terminal.
Species	Human
Source	Wheat Germ
Description	FAM105A (Family With Sequence Similarity 105 Member A) is a Protein Coding gene. An important paralog of this gene is OTULIN.
Molecular Mass	64.9 kDa
AA Sequence	MAATRSPTRRERERSGAPAAGSDQVHSWMLATSQALDTVWRMAKGFVMLAVSFLVAAICYFRRLHLYSGHKLKWWIGYLQRKFKRNLSVEAEVDLLSYCAREWKGETPRNKLMRKAYEELFWRHHIKCVRQVRRDNYDALRSVLFQIFSQGISFPSWMKEKDIVKLEKLLFSQGCNWIQQYSFGPEKYTGSNVFGKLRKYVELLKTQWTEFNGIRDYHKRGS MCNTLFSDAILEYKLYEALKFIMLYQVTEVYEQMKTKKVIPSLFRLLFSRETSSDPLSFMMNHLNSVGDTCGLEQIDMFILGYSLEVKIKVFRLFKFNSRDFEVCYPEEPLRDWPEISLLTENDRHYHIPVF
Applications	Enzyme-linked Immunoabsorbent Assay Western Blot (Recombinant protein) Antibody Production Protein Array

 Tel: 1-631-559-9269 1-516-512-3133

 Email: info@creative-biomart.com  Fax: 1-631-938-8127

 45-1 Ramsey Road, Shirley, NY 11967, USA

Notes	Best use within three months from the date of receipt of this protein.
Storage	Store at -80 centigrade. Aliquot to avoid repeated freezing and thawing.
Storage Buffer	50 mM Tris-HCl, 10 mM reduced Glutathione, pH=8.0 in the elution buffer.

GENE INFORMATION

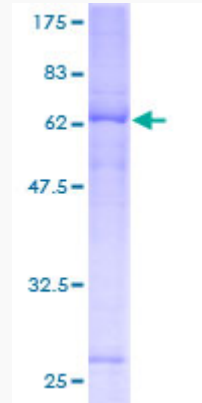
Gene Name	FAM105A family with sequence similarity 105, member A [Homo sapiens]
Official Symbol	FAM105A
Synonyms	FAM105A; family with sequence similarity 105, member A; protein FAM105A; FLJ11127; NET20; FLJ43660;
Gene ID	54491
mRNA Refseq	NM_019018
Protein Refseq	NP_061891
UniProt ID	Q9NUU6

 Tel: 1-631-559-9269 1-516-512-3133

 Email: info@creative-biomart.com  Fax: 1-631-938-8127

 45-1 Ramsey Road, Shirley, NY 11967, USA

**Quality Control
Testing**



12.5% SDS-PAGE Stained with Coomassie Blue.

 Tel: 1-631-559-9269 1-516-512-3133

 Email: info@creative-biomart.com  Fax: 1-631-938-8127

 45-1 Ramsey Road, Shirley, NY 11967, USA