

Recombinant Human FAM122A Protein, GST-tagged

Cat. No. FAM122A-3689H **Lot. No.** (See product label)

SPECIFICATION

Product Overview	Human FAM122A full-length ORF (NP_612206.3, 1 a.a. - 287 a.a.) recombinant protein with GST-tag at N-terminal.
Species	Human
Source	Wheat Germ
Description	FAM122A (Family With Sequence Similarity 122A) is a Protein Coding gene. An important paralog of this gene is FAM122B.
Molecular Mass	56.9 kDa
AA Sequence	MAQEKMELDLELPPGTGGSPAEGGGSGGGGGLRRSNSAPLIHGLSDTSPVFQAEA PSARRNSTTFPSRHGLLLPASPVRMHSSRLHQIKQEEGMDLINRETVHEREVQTAM QISHSWEEFSLSNDNDVEKSASPKRIDFIPVSPAPSPTRGIGKQCFSPSLQSFVSSN GLPPSPIPSPTRFTTRRSQSPINCIRPSVLGPLKRCCEMETEYQPKRFFQGITNMLS SDVAQLSDPGVCVSSDTLDGNSSSAGSSCNSPAKVSTTTDSPVSPAQAASPFIPLD ELSSK
Applications	Enzyme-linked Immunoabsorbent Assay Western Blot (Recombinant protein) Antibody Production Protein Array
Notes	Best use within three months from the date of receipt of this protein.

 Tel: 1-631-559-9269 1-516-512-3133

 Email: info@creative-biomart.com  Fax: 1-631-938-8127

 45-1 Ramsey Road, Shirley, NY 11967, USA

Storage Store at -80 centigrade. Aliquot to avoid repeated freezing and thawing.

Storage Buffer 50 mM Tris-HCl, 10 mM reduced Glutathione, pH=8.0 in the elution buffer.

GENE INFORMATION

Gene Name FAM122A family with sequence similarity 122A [Homo sapiens]

Official Symbol FAM122A

Synonyms FAM122A; family with sequence similarity 122A; C9orf42, chromosome 9 open reading frame 42; protein FAM122A; MGC17347; C9orf42;

Gene ID 116224

mRNA Refseq NM_138333

Protein Refseq NP_612206

MIM 617249

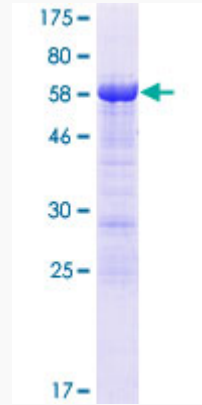
UniProt ID Q96E09

 Tel: 1-631-559-9269 1-516-512-3133

 Email: info@creative-biomart.com  Fax: 1-631-938-8127

 45-1 Ramsey Road, Shirley, NY 11967, USA

**Quality Control
Testing**



12.5% SDS-PAGE Stained with Coomassie Blue.

 Tel: 1-631-559-9269 1-516-512-3133

 Email: info@creative-biomart.com  Fax: 1-631-938-8127

 45-1 Ramsey Road, Shirley, NY 11967, USA