

## Recombinant Human FAM129A Protein, GST-tagged

Cat. No. FAM129A-3700H Lot. No. (See product label)

### SPECIFICATION

<b>Product Overview</b>	Human FAM129A full-length ORF ( NP_443198.1, 1 a.a. - 928 a.a.) recombinant protein with GST-tag at N-terminal.
<b>Species</b>	Human
<b>Source</b>	Wheat Germ
<b>Description</b>	This gene encodes a member of the family with sequence similarity 129 protein family. This gene is highly expressed in several cancer cells and may serve as a prognostic marker for certain cancers. The encoded protein may play a role in regulating p53-mediated apoptosis. [provided by RefSeq, Sep 2016]
<b>Molecular Mass</b>	129.5 kDa
<b>AA Sequence</b>	<p>MGGSASSQLDEGKCAIYIRGKTEAAIKNFSPYYSRQYSVAFCNHVRTEVEQQRDLTS            QFLKTKPPLAPGTILYEAELSQFSEDIKKWKERYVVVKNDYAVESYENKEAYQRGAA            PKCRILPAGGKVLTSSEDEYNLLSDRHFDPPLASSEKENTQPFVVLPEKFPVYLWQPF            FRHGYFCFHEAADQKRFSALLSDCVRHLNHDYMKQMTFEAQAFLEAVQFFRQEKG            HYGWEMITGDEIQILSNLVMEELLPTLQTDLLPKMKGGKKNDRKRTWGLLLEEAYTL            VQHQVSEGLSALKEECRALTKGLEGTIRSDMDQIVNSKNYLIGKIKAMVAQPAEKSC            LESVQPFLASILEELMGPVSSGFSEVRVLFKEVNEVSQNFQTTKDSVQLKEHLDRL            MNLPLHSVKMEPCYTKVNLLHERLQDLKSRFRFPHIDLVVQRTQNYMQELMENAUF            TFEQLLSPHLQGEASKTAVAIEKVKLRVLKQYDYDSSTIRKKIFQEALVQITLPTVQKA            LASTCKPELQKYEQFIFADHTNMIHVENVYEEILHQILLDETLKVIKEAAILKKHNLFD</p>

 Tel: 1-631-559-9269 1-516-512-3133

 Email: [info@creative-biomart.com](mailto:info@creative-biomart.com)  Fax: 1-631-938-8127

 45-1 Ramsey Road, Shirley, NY 11967, USA

NMALPSESVSSLTDLKPPTGSNQASPARRASAILPGVLGSETLSNEVFQESEEEKQP  
 EVPSSLAKGESLSLPGSPPPDGTEQVIISRVDDPVVNPVATEDTAGLPGTCSSELE  
 FGGTLEDEEPAQEEPEPITASGSLKALRLLTASVEVPVDSAPVMEEDTNGESHVPQ  
 ENEEEEKEPSQAAAIHPDNCEESEVSEREAQPPCPEAHGEELGGFPEVGSPASPP  
 ASGGLTEEPLGPMEGELPGEACTLTAHEGRGGKCTEEDASQQEGCTLGSDPICL  
 SESQVSEEQEEMGGQSSAAQATASVNAEEIKVARIHECQWVVEDAPNPDVLLSHKD  
 DVKEGEGGQESFPELPSEE

<b>Applications</b>	Enzyme-linked Immunoabsorbent Assay Western Blot (Recombinant protein) Antibody Production Protein Array
---------------------	---

<b>Notes</b>	Best use within three months from the date of receipt of this protein.
--------------	--

<b>Storage</b>	Store at -80 centigrade. Aliquot to avoid repeated freezing and thawing.
----------------	--

<b>Storage Buffer</b>	50 mM Tris-HCl, 10 mM reduced Glutathione, pH=8.0 in the elution buffer.
-----------------------	--

## GENE INFORMATION

<b>Gene Name</b>	FAM129A family with sequence similarity 129, member A [ Homo sapiens ]
------------------	--

<b>Official Symbol</b>	FAM129A
------------------------	---------

<b>Synonyms</b>	FAM129A; family with sequence similarity 129, member A; C1orf24, chromosome 1 open reading frame 24; protein Niban; cell growth inhibiting protein 39; GIG39; NIBAN; cell growth-inhibiting gene 39 protein; C1orf24; FLJ38228;
-----------------	---

<b>Gene ID</b>	116496
----------------	--------

 Tel: 1-631-559-9269 1-516-512-3133

 Email: [info@creative-biomart.com](mailto:info@creative-biomart.com)  Fax: 1-631-938-8127

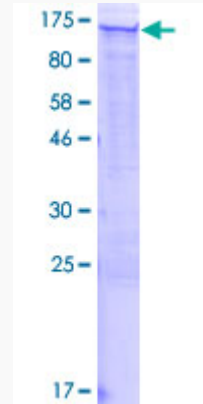
 45-1 Ramsey Road, Shirley, NY 11967, USA

mRNA Refseq NM\_052966

Protein Refseq NP\_443198

UniProt ID Q9BZQ8

**Quality Control  
Testing**



12.5% SDS-PAGE Stained with Coomassie Blue.

 Tel: 1-631-559-9269 1-516-512-3133

 Email: [info@creative-biomart.com](mailto:info@creative-biomart.com)  Fax: 1-631-938-8127

 45-1 Ramsey Road, Shirley, NY 11967, USA