

Recombinant Human FAM160B1 Protein (1-738 aa), His-SUMO-tagged

Cat. No. FAM160B1-1035H Lot. No. (See product label)

SPECIFICATION

Product Overview	Recombinant Human FAM160B1 Protein (1-738 aa) is produced by E. coli expression system. This protein is fused with a 6xHis-SUMO tag at the N-terminal. Research Area: Cell Biology. Protein Description: Full Length of Isoform 2.
Species	Human
Source	E.coli
ProteinLength	1-738 aa
Form	Tris-based buffer, 50% glycerol
Molecular Mass	99.7 kDa
AA Sequence	<p>MFSKFTSILQHAVEALAPSLPLQEDFVYHWKAITHYYIETSDDKAPVTDTNIPSHLEQ MLDILVQEENERESGETGPCMEYLLHHKILETLYTLGKADCPPGMKQQVLVIFYTKLL GRIRQPLPHINVHRPVQKLIRLCGEVLATPTENEEIQFLCIVCAKCLKQDPYLVNFFLE NKMKSLASKGVPNVISEDTLKGQDSLSTDTGQSRQPEELSGATGMEQTELEDEPPH QMDHLSTSLDNLSVTSLPEASVPCPNQDYNLVNSLLNLTRSPDGRIAVKACEGLMLL VSLPEPAAAKCLTQSTCLCELLDRLASLYKALPQSVDPLDIETVEAINWGLDSYSHK EDASAFPGKRALISFLSWFDYCDQLIKEAQKTAVALAKAVHERFFIGVMEPQLMQT SEMGILTSTALLHRIVRQVTSVDVLLQEMVFFILGEQREPETLAEISRHPLRHRLEIHC HISDEISIMTLRMFEHLLQKPNEHILYNLVLRLNLEERNYTEYKPLCPEDKDVVENGLIA GAVDLEEDPLFTDISPENTLPNQEWLSSSPATPDHPKNDGKTEVHKIVNSFLCLVP</p>

Tel: 1-631-559-9269 1-516-512-3133

Email: info@creative-biomart.com Fax: 1-631-938-8127

45-1 Ramsey Road, Shirley, NY 11967, USA

DDAKSSYHVEGTGYDTYLRLDAHRQFRDYCAICLRWEWPGSPKALEKCNLEAAFFE
 GHFLKVLFDPMGRILDQPYDVNLQVTSVLSRLSLFPHPHIHEYLLDPYVNLAPGCRSL
 FSVIVRVVGDMLMRIQRIQDFTPKLLLVRKRLGLEPEGPMQTLPSWW

Purity > 90% as determined by SDS-PAGE.

Notes Repeated freezing and thawing is not recommended. Store working aliquots at 4 centigrade for up to one week.

Storage The shelf life is related to many factors, storage state, buffer ingredients, storage temperature and the stability of the protein itself. Generally, the shelf life of liquid form is 6 months at -20 centigrade/-80 centigrade. The shelf life of lyophilized form is 12 months at -20 centigrade/-80 centigrade.

Concentration A hardcopy of COA with concentration instruction is sent along with the products.

GENE INFORMATION

Gene Name FAM160B1 family with sequence similarity 160, member B1 [Homo sapiens]

Official Symbol FAM160B1

Synonyms FAM160B1; KIAA1600; protein FAM160B1; bA106M7.3; RP11-106M7.3; DKFZp686D10123;

Gene ID 57700

mRNA Refseq NM_001135051

Protein Refseq NP_001128523

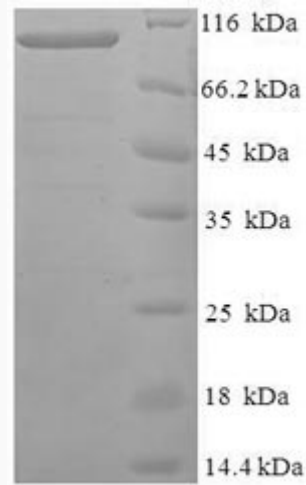
 Tel: 1-631-559-9269 1-516-512-3133

 Email: info@creative-biomart.com  Fax: 1-631-938-8127

 45-1 Ramsey Road, Shirley, NY 11967, USA

UniProt ID

Q5W0V3



(Tris-Glycine gel) Discontinuous SDS-PAGE (reduced) with 5% enrichment gel and 15% separation gel.

Tel: 1-631-559-9269 1-516-512-3133

Email: info@creative-biomart.com Fax: 1-631-938-8127

45-1 Ramsey Road, Shirley, NY 11967, USA