

Recombinant Human FAM160B1 Protein, Myc/DDK-tagged, C13 and N15-labeled

Cat. No. FAM160B1-3174H Lot. No. (See product label)

SPECIFICATION

Product Overview	FAM160B1 MS Standard C13 and N15-labeled recombinant protein (NP_065991) with a C-terminal MYC/DDK tag, was expressed in HEK293 cells.
Species	Human
Source	HEK293
Description	FAM160B1 (Family With Sequence Similarity 160 Member B1) is a Protein Coding gene. Diseases associated with FAM160B1 include Orofaciodigital Syndrome Vi and Syndromic Intellectual Disability. An important paralog of this gene is FAM160B2.
Molecular Mass	86.4 kDa
AA Sequence	MFSKFTSILQHAVEALAPSLPLQEDFVYHWKAITHYYIETSDDKAPVTDTNIPSHLEQ MLDILVQEENERESGETGPCMEYLLHHKILETLYTLGKADCPPGMKQQVLVVFYTKLL GRIRQPLLPHINVHRPVQKLIRLCGEVLATPTENEEIQFLCIVCAKQDPYLVNFFLE NKMKSLASKGVPNVISEDTLKGQDSLSTDTGQSRQPEELSGATGMEQTELEDEPPH QMDHLSTSLDNLVSVTSLPEASVCPNQDYNLVNSLLNLTRSPDGRIAVKACEGLMLL VSLPEPAAAKCLTQSTCLCELLDRLASLYKALPQSVDPLDIETVEAINWGLDSYSHK EDASAFPGKRALISFLSWFDYCDQLIKEAQKTAVALAKAVHERFFIGVMQPQLMQT SEMGILTSTALLHRIVRQVTSVLLQEMVFFILGEQREPETLAEISRHPLRHRRLIEHCD HISDEISIMTLRMFEHLLQKPNEHILYNLVLRLNLEERNYTEYKPLCPEDKDVVENGLIA GAVDLEEDPLFTDISPENTLPNQEWLSSSPATPDHPKNDGKTEVHKIVNSFLCLVP

 Tel: 1-631-559-9269 1-516-512-3133

 Email: info@creative-biomart.com  Fax: 1-631-938-8127

 45-1 Ramsey Road, Shirley, NY 11967, USA

DDAKSSYHVEGTGYDTYL RDAHRQFRDYCAICLRWEWPGSPKALEKCNLEAAFFE
 GHFLKVLFD RMGRILDQPYDVNLQVTSVLSRSLFPHPHIHEYLLDPYVNLAPGCRSL
 FSVIVRVVGD LMLRIQRIQDFTP KLLLVRKRLGLEPEGP IIDHITLLEGVIVLEEFCKEL
 AAIAFVKYHASSTPTRTRPLEQKLISEEDLAANDILDYKDDDDKV

Purity > 80% as determined by SDS-PAGE and Coomassie blue staining

Stability Stable for 3 months from receipt of products under proper storage and handling conditions.

Storage Store at -80 centigrade. Avoid repeated freeze-thaw cycles.

Concentration 50 µg/mL as determined by BCA

Storage Buffer 100 mM glycine, 25 mM Tris-HCl, pH 7.3.

GENE INFORMATION

Gene Name FAM160B1 family with sequence similarity 160 member B1 [Homo sapiens (human)]

Official Symbol FAM160B1

Synonyms FAM160B1; family with sequence similarity 160, member B1; KIAA1600; protein FAM160B1; bA106M7.3; RP11-106M7.3; DKFZp686D10123;

Gene ID 57700

mRNA Refseq NM_020940

Protein Refseq NP_065991

 Tel: 1-631-559-9269 1-516-512-3133

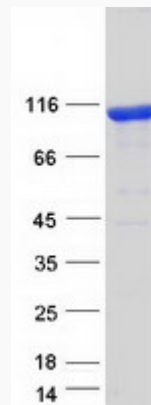
 Email: info@creative-biomart.com  Fax: 1-631-938-8127

 45-1 Ramsey Road, Shirley, NY 11967, USA

MIM 617312

UniProt ID Q5W0V3

SDS-PAGE



 Tel: 1-631-559-9269 1-516-512-3133

 Email: info@creative-biomart.com  Fax: 1-631-938-8127

 45-1 Ramsey Road, Shirley, NY 11967, USA