

Recombinant Human FAM171B protein, His-tagged

Cat. No. FAM171B-134H Lot. No. (See product label)

SPECIFICATION

Product Overview	Recombinant Human FAM171B (Glu33-Thr355) protein was fused to His-tag at C-terminus and expressed in human 293 cells (HEK293).
Species	Human
Source	HEK293
ProteinLength	Glu33-Thr355
Description	Family with sequence similarity 171, member B (FAM171B) is also known as KIAA1946, NPD019, which is a single-pass type I membrane protein, belongs to the FAM171 family.
Predicted N Terminal	Glu33
Form	Lyophilized from 0.22 µm filtered solution in PBS, pH7.4, 10% trehalose.
Molecular Mass	The protein has a calculated MW of 37 kDa. The protein migrates as 45-55 kDa under reducing (R) condition (SDS-PAGE) due to glycosylation.
Endotoxin	Less than 1.0 EU per µg by the LAL method.
Purity	>92% as determined by SDS-PAGE.
Storage	For long term storage, the product should be stored at lyophilized state at -20

 Tel: 1-631-559-9269 1-516-512-3133

 Email: info@creative-biomart.com  Fax: 1-631-938-8127

 45-1 Ramsey Road, Shirley, NY 11967, USA

centigrade or lower.
Please avoid repeated freeze-thaw cycles.
This product is stable after storage at:
-20 to -70 centigrade for 12 months in lyophilized state;
-70 centigrade for 3 months under sterile conditions after reconstitution.

Reconstitution It is recommended that sterile water be added to the vial to prepare a stock solution of 0.2 ug/ul. Centrifuge the vial at 4°C before opening to recover the entire contents.

GENE INFORMATION

Gene Name FAM171B

Official Symbol FAM171B

Synonyms KIAA1946

Gene ID 165215

mRNA Refseq NM_177454.3

Protein Refseq NP_803237.3

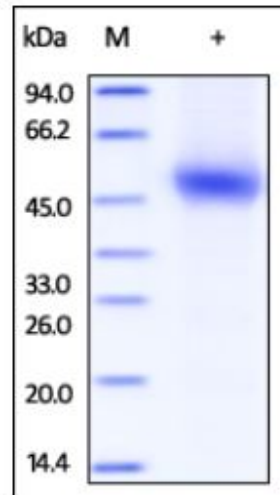
UniProt ID Q6P995

 Tel: 1-631-559-9269 1-516-512-3133

 Email: info@creative-biomart.com  Fax: 1-631-938-8127

 45-1 Ramsey Road, Shirley, NY 11967, USA

**SDS-PAGE of
FAM171B-134H**



Human FAM171B, His Tag on SDS-PAGE under reducing (R) condition. The gel was stained overnight with Coomassie Blue. The purity of the protein is greater than 92%.

 Tel: 1-631-559-9269 1-516-512-3133

 Email: info@creative-biomart.com  Fax: 1-631-938-8127

 45-1 Ramsey Road, Shirley, NY 11967, USA