

Recombinant Human FAM19A4 Protein, GST-tagged

Cat. No. FAM19A4-3732H **Lot. No.** (See product label)

SPECIFICATION

Product Overview	Human FAM19A4 full-length ORF (NP_001005527.1, 1 a.a. - 140 a.a.) recombinant protein with GST-tag at N-terminal.
Species	Human
Source	Wheat Germ
Description	<p>This gene is a member of the Tafa family which is composed of five highly homologous genes that encode small secreted proteins. These proteins contain conserved cysteine residues at fixed positions, and are distantly related to MIP-1alpha, a member of the CC-chemokine family. The Tafa proteins are predominantly expressed in specific regions of the brain, and are postulated to function as brain-specific chemokines or neurokines, that act as regulators of immune and nervous cells. Alternatively spliced transcript variants have been observed for this gene. [provided by RefSeq, Nov 2011]</p>
Molecular Mass	42.1 kDa
AA Sequence	<p>MRSRPMRVCAKSVLLSHWLFLAYVLMVCCCKLMSASSQHLRGHAGHHQIKQGTCEV VAVHRCCNKNRIEERSQTVKCSFCFGQVAGTTRAQPSVEASIVIQKWWCHMNPC LEGEDCKVLPDYSGWSCSSGNKVKTTKVTR</p>
Applications	<p>Enzyme-linked Immunoabsorbent Assay Western Blot (Recombinant protein) Antibody Production</p>

 Tel: 1-631-559-9269 1-516-512-3133

 Email: info@creative-biomart.com  Fax: 1-631-938-8127

 45-1 Ramsey Road, Shirley, NY 11967, USA

	Protein Array
Notes	Best use within three months from the date of receipt of this protein.
Storage	Store at -80 centigrade. Aliquot to avoid repeated freezing and thawing.
Storage Buffer	50 mM Tris-HCl, 10 mM reduced Glutathione, pH=8.0 in the elution buffer.

GENE INFORMATION

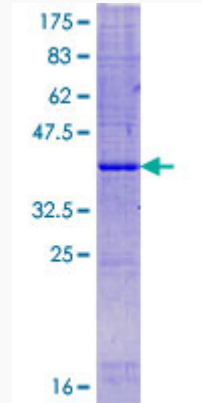
Gene Name	FAM19A4 family with sequence similarity 19 (chemokine (C-C motif)-like), member A4 [Homo sapiens]
Official Symbol	FAM19A4
Synonyms	FAM19A4; family with sequence similarity 19 (chemokine (C-C motif)-like), member A4; protein FAM19A4; TAFA 4; chemokine-like protein TAFA-4; TAFA4; TAFA-4; FLJ25161;
Gene ID	151647
mRNA Refseq	NM_001005527
Protein Refseq	NP_001005527
MIM	617498
UniProt ID	Q96LR4

 Tel: 1-631-559-9269 1-516-512-3133

 Email: info@creative-biomart.com  Fax: 1-631-938-8127

 45-1 Ramsey Road, Shirley, NY 11967, USA

**Quality Control
Testing**



12.5% SDS-PAGE Stained with Coomassie Blue.

 Tel: 1-631-559-9269 1-516-512-3133

 Email: info@creative-biomart.com  Fax: 1-631-938-8127

 45-1 Ramsey Road, Shirley, NY 11967, USA