

Recombinant Human FAM200A Protein, GST-tagged

Cat. No. FAM200A-2652H **Lot. No.** (See product label)

SPECIFICATION

Product Overview	Human DKFZp727G131 full-length ORF (AAH40214, 1 a.a. - 573 a.a.) recombinant protein with GST-tag at N-terminal.
Species	Human
Source	Wheat Germ
Description	This gene encodes a protein of unknown function. The protein is weakly similar to transposase-like proteins in human and mouse. [provided by RefSeq, Jul 2008]
Molecular Mass	88.77 kDa
AA Sequence	<p> MTPESRDTTDLSPGGTQEMEGIVIVKVEEEDHDFQKERNKVESSPQVLSRSTTM NERALLSSYLVAIRVAKEKMAHTAAEKIILPACMDMVRTIFDDKSADKLRTIPLSDNTI SRRICTIAKHLEAMLITRLQSGIDFAIQLDESTDIASCPTLLVYVRYVWQDDFVEDLLC CLNLNSHITGLDLFTELENCLLGQYKLNWKHCKGISSDGTANMTGKHSRLTEKLLEA THNNAVWNHCFIHREALVSKEISPSLMDVLKNAVKTVNFVKGSSLSRLLLEIFCSEIGV NHTHLLFHTEVRWLSQGKVLRSVYELRNEIYIFLVEKQSHLANIFEDDIWVTKLAYLS DIFGILNELSLKMQGKNNDFQYLEHILGFQKTLWWQARLKS NRPSYMFPTLLQHIE ENIINEDCLKEIKLEILLHTSLSQTFNYYFPEEKFESLKENIWMKDPFAFQNPESIILN LEPEEENELLQLSSSFTLNYYKILSLSAFWIKIKDDFPLLSRKSILLPFTTTYLCELG FSILTRLKTKKRNLNSAPDMRVALSSCVDPDWKELMNRQAHPH </p>
Applications	Enzyme-linked Immunoabsorbent Assay Western Blot (Recombinant protein)

 Tel: 1-631-559-9269 1-516-512-3133

 Email: info@creative-biomart.com  Fax: 1-631-938-8127

 45-1 Ramsey Road, Shirley, NY 11967, USA

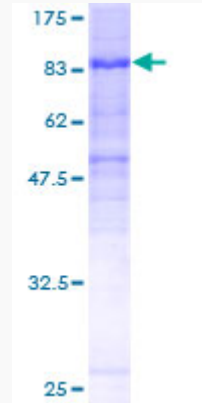
	Antibody Production Protein Array
Notes	Best use within three months from the date of receipt of this protein.
Storage	Store at -80 centigrade. Aliquot to avoid repeated freezing and thawing.
Storage Buffer	50 mM Tris-HCl, 10 mM reduced Glutathione, pH=8.0 in the elution buffer.
GENE INFORMATION	
Gene Name	FAM200A family with sequence similarity 200 member A [Homo sapiens (human)]
Official Symbol	FAM200A
Synonyms	FAM200A; family with sequence similarity 200 member A; Family With Sequence Similarity 200 Member A; C7orf38; Family With Sequence Similarity 200, Member A; Chromosome 7 Open Reading Frame 38; Protein FAM200A; protein FAM200A
Gene ID	221786
mRNA Refseq	NM_145111
Protein Refseq	NP_659802
UniProt ID	Q8TCP9

 Tel: 1-631-559-9269 1-516-512-3133

 Email: info@creative-biomart.com  Fax: 1-631-938-8127

 45-1 Ramsey Road, Shirley, NY 11967, USA

**Quality Control
Testing**



12.5% SDS-PAGE Stained with Coomassie Blue.

 Tel: 1-631-559-9269 1-516-512-3133

 Email: info@creative-biomart.com  Fax: 1-631-938-8127

 45-1 Ramsey Road, Shirley, NY 11967, USA