

Recombinant Human FAM20A Protein (Lys368-Ser541), N-His tagged

Cat. No. FAM20A-2945H **Lot. No.** (See product label)

SPECIFICATION

Product Overview	Recombinant human FAM20A (Lys368-Ser541) protein fused with the N-His tag was expressed in E. coli.
Species	Human
Source	E.coli
ProteinLength	Lys368-Ser541
Molecular Mass	22.16 kDa
Purity	>90 % as determined by SDS-PAGE.
Notes	For research use only.
Storage	Use a manual defrost freezer and avoid repeated freeze thaw cycles. Store at 2 to 8 centigrade for one week. Store at -20 to -80 centigrade for twelve months from the date of receipt.
Storage Buffer	0.01M PBS, pH 7.4, 0.02 % NLS
Reconstitution	Reconstitute in sterile water for a stock solution.
Shipping	In general, proteins are provided as lyophilized powder/frozen liquid. They are

 Tel: 1-631-559-9269 1-516-512-3133

 Email: info@creative-biomart.com  Fax: 1-631-938-8127

 45-1 Ramsey Road, Shirley, NY 11967, USA

shipped out with dry ice/blue ice unless customers require otherwise.

GENE INFORMATION

Gene Name FAM20A family with sequence similarity 20, member A [Homo sapiens (human)]

Official Symbol FAM20A

Synonyms FAM20A; family with sequence similarity 20, member A; protein FAM20A; DKFZp434F2322; AIGFS; FP2747;

Gene ID 54757

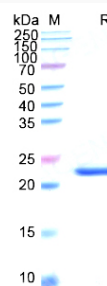
mRNA Refseq NM_001243746

Protein Refseq NP_001230675

MIM 611062

UniProt ID Q96MK3

SDS-PAGE



 Tel: 1-631-559-9269 1-516-512-3133

 Email: info@creative-biomart.com  Fax: 1-631-938-8127

 45-1 Ramsey Road, Shirley, NY 11967, USA