

Recombinant Human FAM20B Protein, GST-tagged

Cat. No. FAM20B-3736H **Lot. No.** (See product label)

SPECIFICATION

Product Overview	Human FAM20B full-length ORF (NP_055679.1, 1 a.a. - 409 a.a.) recombinant protein with GST-tag at N-terminal.
Species	Human
Source	Wheat Germ
Description	FAM20B (FAM20B, Glycosaminoglycan Xylosylkinase) is a Protein Coding gene. GO annotations related to this gene include kinase activity and phosphotransferase activity, alcohol group as acceptor. An important paralog of this gene is FAM20C.
Molecular Mass	72.8 kDa
AA Sequence	<p>MKLKQRVLLAILLVIFFTKVFLIDNLDTSANREDQRAFHRMMTGLRVELAPKLDHT LQSPWEIAAQWVVPREVPEETPELGAVMHAMATKKIHKADVGYKGTQLKALLILEG GQKVVFKPKRYSRDHVVEGEPYAGYDRHNAEVAAFHLDRILGFHRAPLVVGRFVNL RTEIKPVATEQLLSTFLTVGNNTCFYKCYCRETEPACADGDIMEGSVTLWLDPV WPLQKHRHPWGRTYREGKLARWEYDESYCDAVKKTSYDSGPRLLDIIDTAVFDYL IGNADRHHYESFQDDEGASMLILLDNAKSFGNPSLDERSILAPLYQCCIIRVSTWNRL NYLKNGVLKSALKSAMAHDPISPVLSDPHLDAVDQRLLSVLATVKQCTDQFGMDTVL VEDRMPLSHL</p>
Applications	<p>Enzyme-linked Immunoabsorbent Assay Western Blot (Recombinant protein) Antibody Production</p>

 Tel: 1-631-559-9269 1-516-512-3133

 Email: info@creative-biomart.com  Fax: 1-631-938-8127

 45-1 Ramsey Road, Shirley, NY 11967, USA

Protein Array

Notes	Best use within three months from the date of receipt of this protein.
Storage	Store at -80 centigrade. Aliquot to avoid repeated freezing and thawing.
Storage Buffer	50 mM Tris-HCl, 10 mM reduced Glutathione, pH=8.0 in the elution buffer.

GENE INFORMATION

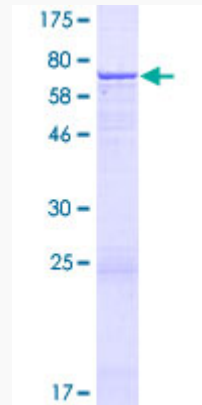
Gene Name	FAM20B family with sequence similarity 20, member B [Homo sapiens]
Official Symbol	FAM20B
Synonyms	gxl1; FAM20B; family with sequence similarity 20, member B
Gene ID	9917
mRNA Refseq	NM_014864
Protein Refseq	NP_055679
MIM	611063
UniProt ID	O75063

 Tel: 1-631-559-9269 1-516-512-3133

 Email: info@creative-biomart.com  Fax: 1-631-938-8127

 45-1 Ramsey Road, Shirley, NY 11967, USA

**Quality Control
Testing**



12.5% SDS-PAGE Stained with Coomassie Blue.

 Tel: 1-631-559-9269 1-516-512-3133

 Email: info@creative-biomart.com  Fax: 1-631-938-8127

 45-1 Ramsey Road, Shirley, NY 11967, USA