

Recombinant Human FAM3A Protein, GST-tagged

Cat. No. FAM3A-3751H Lot. No. (See product label)

SPECIFICATION

Product Overview	Human FAM3A full-length ORF (AAH08912.1, 1 a.a. - 230 a.a.) recombinant protein with GST-tag at N-terminal.
Species	Human
Source	Wheat Germ
Description	This gene encodes a cytokine-like protein. The expression of this gene may be regulated by peroxisome proliferator-activated receptor gamma, and the encoded protein may be involved in the regulation of glucose and lipid metabolism. Alternative splicing results in multiple transcript variants. [provided by RefSeq, Aug 2013]
Molecular Mass	51.6 kDa
AA Sequence	MRLAGPLRIVVLVSVGVTWIVVSILLGGPGSGFPRIQQLFTSPESSVTAAPRARKYK CGLPQPCPEEHLAFRVVSGAANVIGPKICLEDKMLMSSVKDNVGRGLNIALVNGVSG ELIARAFDMWAGDVNDLLKFIRPLHEGTLV FVASYDDPATKMNEETRKLFSELGSR NAKELAFRDSWV FVGAKGVQNKSPFEQHVKN SKHSNKYEGWPEALEMEGCIPRRS TAS
Applications	Enzyme-linked Immunoabsorbent Assay Western Blot (Recombinant protein) Antibody Production Protein Array

 Tel: 1-631-559-9269 1-516-512-3133

 Email: info@creative-biomart.com  Fax: 1-631-938-8127

 45-1 Ramsey Road, Shirley, NY 11967, USA

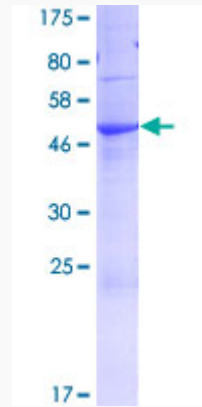
Notes	Best use within three months from the date of receipt of this protein.
Storage	Store at -80 centigrade. Aliquot to avoid repeated freezing and thawing.
Storage Buffer	50 mM Tris-HCl, 10 mM reduced Glutathione, pH=8.0 in the elution buffer.
GENE INFORMATION	
Gene Name	FAM3A family with sequence similarity 3, member A [Homo sapiens]
Official Symbol	FAM3A
Synonyms	family with sequence similarity 3, member A; 13749; Ensembl:ENSG00000071889; protein FAM3A;cytokine-like protein 2-19; DLD; 2.19; XAP-7; DXS560S
Gene ID	60343
mRNA Refseq	NM_001171132
Protein Refseq	NP_001164603
MIM	300492
UniProt ID	P98173

 Tel: 1-631-559-9269 1-516-512-3133

 Email: info@creative-biomart.com  Fax: 1-631-938-8127

 45-1 Ramsey Road, Shirley, NY 11967, USA

**Quality Control
Testing**



12.5% SDS-PAGE Stained with Coomassie Blue.

 Tel: 1-631-559-9269 1-516-512-3133

 Email: info@creative-biomart.com  Fax: 1-631-938-8127

 45-1 Ramsey Road, Shirley, NY 11967, USA