

Recombinant Human FAM3C Protein, GST-tagged

Cat. No. FAM3C-3754H **Lot. No.** (See product label)

SPECIFICATION

Product Overview	Human FAM3C full-length ORF (AAH46932, 25 a.a. - 227 a.a.) recombinant protein with GST-tag at N-terminal.
Species	Human
Source	Wheat Germ
Description	This gene is a member of the family with sequence similarity 3 (FAM3) family and encodes a secreted protein with a GG domain. A change in expression of this protein has been noted in pancreatic cancer-derived cells. [provided by RefSeq, Mar 2010]
Molecular Mass	48.07 kDa
AA Sequence	QVFEIKMDASLGNLFARSALDTAARSTKPPRYKCGISKACPEKHFAFKMASGAANVV GPKICLEDNVLMSGVKNNVGRGINVALANGKTGEVLDTKYFDMWGGDVAPFIEFLK AIQDGTIVLMGTYDDGATKLNDEARRLIADLGSTSITNLGFRDNWVFCGGKGIKTKSP FEQHIKNNKDTNKYEGWPEVVEMEGCIPQKQD
Applications	Enzyme-linked Immunoabsorbent Assay Western Blot (Recombinant protein) Antibody Production Protein Array
Notes	Best use within three months from the date of receipt of this protein.

 Tel: 1-631-559-9269 1-516-512-3133

 Email: info@creative-biomart.com  Fax: 1-631-938-8127

 45-1 Ramsey Road, Shirley, NY 11967, USA

Storage Store at -80 centigrade. Aliquot to avoid repeated freezing and thawing.

Storage Buffer 50 mM Tris-HCl, 10 mM reduced Glutathione, pH=8.0 in the elution buffer.

GENE INFORMATION

Gene Name FAM3C family with sequence similarity 3, member C [Homo sapiens]

Official Symbol FAM3C

Synonyms FAM3C; family with sequence similarity 3, member C; protein FAM3C; GS3876; ILEI; interleukin like EMT inducer; predicted osteoblast protein; interleukin-like EMT inducer; GS3786;

Gene ID 10447

mRNA Refseq NM_001040020

Protein Refseq NP_001035109

MIM 608618

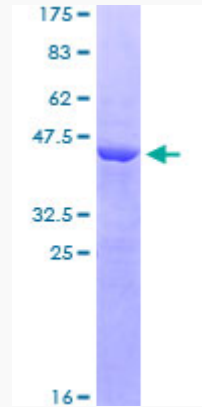
UniProt ID Q92520

 Tel: 1-631-559-9269 1-516-512-3133


 Email: info@creative-biomart.com  Fax: 1-631-938-8127

 45-1 Ramsey Road, Shirley, NY 11967, USA


**Quality Control
Testing**



12.5% SDS-PAGE Stained with Coomassie Blue

 Tel: 1-631-559-9269 1-516-512-3133

 Email: info@creative-biomart.com  Fax: 1-631-938-8127

 45-1 Ramsey Road, Shirley, NY 11967, USA