

## Recombinant Human FAM3C Protein, Myc/DDK-tagged, C13 and N15-labeled

Cat. No. FAM3C-4333H Lot. No. (See product label)

### SPECIFICATION

<b>Product Overview</b>	FAM3C MS Standard C13 and N15-labeled recombinant protein (NP_055703) with a C-terminal MYC/DDK tag, was expressed in HEK293 cells.
<b>Species</b>	Human
<b>Source</b>	HEK293
<b>Description</b>	This gene is a member of the family with sequence similarity 3 (FAM3) family and encodes a secreted protein with a GG domain. A change in expression of this protein has been noted in pancreatic cancer-derived cells.
<b>Molecular Mass</b>	24.7 kDa
<b>AA Sequence</b>	MRVAGAAKLVVAVAVFLLTFYVISQVFEIKMDASLG NLFARSALDTAARSTKPPRYKC GISKACPEKHFAFKMASGAANVVGPKICLEDNVLMSGVKNNVGRGINVALANGKTG EVLDTKYFDMWGGDVAPFIEFLKAIQDGTIVLMGTYDDGATKLNDEARRLIADLGSTS ITNLGFRDNWVFCGGKGIKTKSPFEQHIKNNKDTNKYEGWPEVVEMEGCIPQKQDT RTRPLEQKLISEEDLAANDILDYKDDDDKV
<b>Purity</b>	> 80% as determined by SDS-PAGE and Coomassie blue staining
<b>Stability</b>	Stable for 3 months from receipt of products under proper storage and handling conditions.

 Tel: 1-631-559-9269 1-516-512-3133

 Email: [info@creative-biomart.com](mailto:info@creative-biomart.com)  Fax: 1-631-938-8127

 45-1 Ramsey Road, Shirley, NY 11967, USA

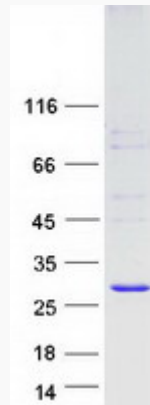
<b>Storage</b>	Store at -80 centigrade. Avoid repeated freeze-thaw cycles.
<b>Concentration</b>	50 µg/mL as determined by BCA
<b>Storage Buffer</b>	100 mM glycine, 25 mM Tris-HCl, pH 7.3.
<b>GENE INFORMATION</b>	
<b>Gene Name</b>	FAM3C FAM3 metabolism regulating signaling molecule C [ Homo sapiens (human) ]
<b>Official Symbol</b>	FAM3C
<b>Synonyms</b>	FAM3C; family with sequence similarity 3, member C; protein FAM3C; GS3876; ILEI; interleukin like EMT inducer; predicted osteoblast protein; interleukin-like EMT inducer; GS3786;
<b>Gene ID</b>	10447
<b>mRNA Refseq</b>	NM_014888
<b>Protein Refseq</b>	NP_055703
<b>MIM</b>	608618
<b>UniProt ID</b>	Q92520

 Tel: 1-631-559-9269 1-516-512-3133

 Email: [info@creative-biomart.com](mailto:info@creative-biomart.com)  Fax: 1-631-938-8127

 45-1 Ramsey Road, Shirley, NY 11967, USA

**SDS-PAGE**



 Tel: 1-631-559-9269 1-516-512-3133

 Email: [info@creative-biomart.com](mailto:info@creative-biomart.com)  Fax: 1-631-938-8127

 45-1 Ramsey Road, Shirley, NY 11967, USA