

## Recombinant Human FAM3D Protein, His-tagged

Cat. No. FAM3D-3755H Lot. No. (See product label)

### SPECIFICATION

<b>Product Overview</b>	Human FAM3D (NP_620160, 26 a.a. - 224 a.a.) partial recombinant protein with C-terminal hexahistidine tag expressed in HEK293EBNA1 cells.
<b>Species</b>	Human
<b>Source</b>	HEK293
<b>ProteinLength</b>	26-224 a.a.
<b>Description</b>	FAM3D (Family With Sequence Similarity 3 Member D) is a Protein Coding gene. Diseases associated with FAM3D include Narcolepsy. GO annotations related to this gene include cytokine activity. An important paralog of this gene is FAM3A.
<b>Form</b>	Liquid
<b>Molecular Mass</b>	23.1 kDa
<b>AA Sequence</b>	GSYMSFSMKTIRLPRLAASPTKEIQVKKYKCGLIKPCPANYFAFKICSGAANVVGPT MCFEDRMIMSPVKNVGRGLNIALVNGTTGAVLGQKAFDMYSGDVMHLVKKEIPGG ALVLVASYDDPGTKMNDESRLKLFSDLGSSYAKQLGFRDSWVGAKDLRGKSPFEQK NSPDTNKYEGWPELLEMEGCMPPKPF AAAHHHHHH
<b>Applications</b>	SDS-PAGE
<b>Storage</b>	Store at -80 centigrade. Aliquot to avoid repeated freezing and thawing.

 Tel: 1-631-559-9269 1-516-512-3133

 Email: [info@creative-biomart.com](mailto:info@creative-biomart.com)  Fax: 1-631-938-8127

 45-1 Ramsey Road, Shirley, NY 11967, USA

**Storage Buffer** In 25 mM Tris, 150 mM NaCl, pH 7.5 without preservative.

## GENE INFORMATION

**Gene Name** FAM3D family with sequence similarity 3, member D [ Homo sapiens ]

**Official Symbol** FAM3D

**Synonyms** FAM3D; family with sequence similarity 3, member D; protein FAM3D; EF7; OIT1; cytokine-like protein EF-7;

**Gene ID** 131177

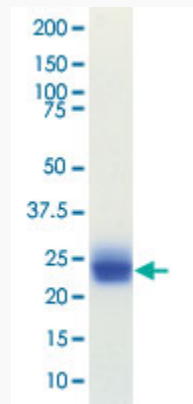
**mRNA Refseq** NM\_138805

**Protein Refseq** NP\_620160

**MIM** 608619

**UniProt ID** Q96BQ1

**Quality Control Testing**



 Tel: 1-631-559-9269 1-516-512-3133

 Email: [info@creative-biomart.com](mailto:info@creative-biomart.com)  Fax: 1-631-938-8127

 45-1 Ramsey Road, Shirley, NY 11967, USA



NuPAGE Stained with Coomassie Blue

 Tel: 1-631-559-9269 1-516-512-3133

 Email: [info@creative-biomart.com](mailto:info@creative-biomart.com)  Fax: 1-631-938-8127

 45-1 Ramsey Road, Shirley, NY 11967, USA