

Recombinant Human FANCL Protein, GST-tagged

Cat. No. FANCL-3834H Lot. No. (See product label)

SPECIFICATION

Product Overview	Human FANCL full-length ORF (AAH54517, 1 a.a. - 375 a.a.) recombinant protein with GST-tag at N-terminal.
Species	Human
Source	Wheat Germ
Description	<p>The Fanconi anemia complementation group (FANC) currently includes FANCA, FANCB, FANCC, FANCD1 (also called BRCA2), FANCD2, FANCE, FANCF, FANCG, FANCI, FANCI (also called BRIP1), FANCL, FANCM and FANCN (also called PALB2). The previously defined group FANCH is the same as FANCA. Fanconi anemia is a genetically heterogeneous recessive disorder characterized by cytogenetic instability, hypersensitivity to DNA crosslinking agents, increased chromosomal breakage, and defective DNA repair. The members of the Fanconi anemia complementation group do not share sequence similarity; they are related by their assembly into a common nuclear protein complex. This gene encodes the protein for complementation group L. Alternative splicing results in two transcript variants encoding different isoforms. [provided by RefSeq, Jul 2008]</p>
Molecular Mass	66.99 kDa
AA Sequence	<p>MAVTEASLLRQCPLLLPQNRSKTVYEGFISAQGRDFHLRIVLPEDLQLKNARLLCSW QLRTILSGYHRIVQQRMQHSPDLMSFMMELKMLLEVALKNRQELYALPPPPQFYSSL IEEIGTLGWDKLVYADTCFSTIKLKAEDASGREHLITLKLKAKYPAESPDYFVDFPVPF</p>

 Tel: 1-631-559-9269 1-516-512-3133

 Email: info@creative-biomart.com  Fax: 1-631-938-8127

 45-1 Ramsey Road, Shirley, NY 11967, USA



CASWTPQSSLSIYSQFLAAIESLKAFWDVMDEIDEKTWVLEPEKPPRSATARRIALG
NNVSINIEVDPRHPTMLPECFFLGADR VVKPLGIKLSRNIHLWDPENSVLQNLKDVLEI
DFPARAILEKSDFTMDCGICYAYQLDGTIPDQVCDNSQCGQPFFHQICLYEWLRGLLT
SRQSFNVIFGECPYCCKPITLKMSGRKH

Applications	Enzyme-linked Immunoabsorbent Assay Western Blot (Recombinant protein) Antibody Production Protein Array
Notes	Best use within three months from the date of receipt of this protein.
Storage	Store at -80 centigrade. Aliquot to avoid repeated freezing and thawing.
Storage Buffer	50 mM Tris-HCl, 10 mM reduced Glutathione, pH=8.0 in the elution buffer.

GENE INFORMATION

Gene Name	FANCL Fanconi anemia, complementation group L [Homo sapiens]
Official Symbol	FANCL
Synonyms	FANCL; Fanconi anemia, complementation group L; PHD finger protein 9 , PHF9; E3 ubiquitin-protein ligase FANCL; FAAP43; FLJ10335; Pog; PHD finger protein 9; fanconi anemia group L protein; fanconi anemia-associated polypeptide of 43 kDa; POG; PHF9;
Gene ID	55120
mRNA Refseq	NM_001114636

Tel: 1-631-559-9269 1-516-512-3133

Email: info@creative-biomart.com Fax: 1-631-938-8127

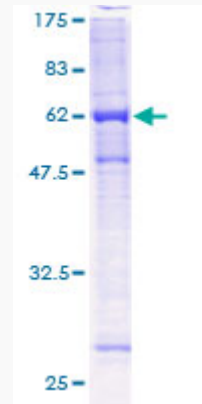
45-1 Ramsey Road, Shirley, NY 11967, USA

Protein Refseq NP_001108108

MIM 608111

UniProt ID Q9NW38

**Quality Control
Testing**



12.5% SDS-PAGE Stained with Coomassie Blue.

 Tel: 1-631-559-9269 1-516-512-3133

 Email: info@creative-biomart.com  Fax: 1-631-938-8127

 45-1 Ramsey Road, Shirley, NY 11967, USA