

## Recombinant Human FAP protein, His-Avi-tagged

**Cat. No.** FAP-884H    **Lot. No.** (See product label)

### SPECIFICATION

<b>Product Overview</b>	Recombinant Human FAP Protein is expressed from mammalian with a His and Avi tag at the Nterminal. It contains Leu26-Asp760.
<b>Species</b>	Human
<b>Source</b>	HEK293
<b>ProteinLength</b>	It contains Leu26-Asp760.
<b>Description</b>	Fibroblast activation protein (FAP) is a serine protease that has been reported in fibroblasts and some carcinoma cells, which correlates with poor patient outcomes. FAP can be induced under hypoxia which is also vital in the malignant behaviors of cancer cells.
<b>Form</b>	Supplied as 0.22um filtered solution in PBS (pH 7.4).
<b>Molecular Mass</b>	The protein has a predicted MW of 87.9 kDa. Due to glycosylation, the protein migrates to 90- 100KDa based on Bis-Tris PAGE result.
<b>Endotoxin</b>	Less than 1EU per ug by the LAL method.
<b>Purity</b>	> 95% as determined by Tris-Bis PAGE; > 95% as determined by HPLC
<b>Storage</b>	The product should be stored at -70°C. Please do not repeated freeze-thaw cycles.

 Tel: 1-631-559-9269    1-516-512-3133

 Email: [info@creative-biomart.com](mailto:info@creative-biomart.com)     Fax: 1-631-938-8127

 45-1 Ramsey Road, Shirley, NY 11967, USA

**Reconstitution** It is recommended that sterile water be added to the vial to prepare a stock solution of 0.2 ug/ul. Centrifuge the vial at 4°C before opening to recover the entire contents.

## GENE INFORMATION

**Gene Name** FAP fibroblast activation protein, alpha [ Homo sapiens ]

**Official Symbol** FAP

**Synonyms** FAP;FAPalpha;SIMP;Seprase;APCE

**Gene ID** 2191

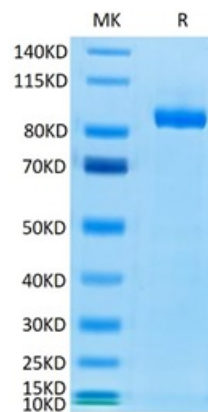
**mRNA Refseq** NM\_004460

**Protein Refseq** NP\_004451

**MIM** 600403

**UniProt ID** Q12884

### Tris-Bis PAGE



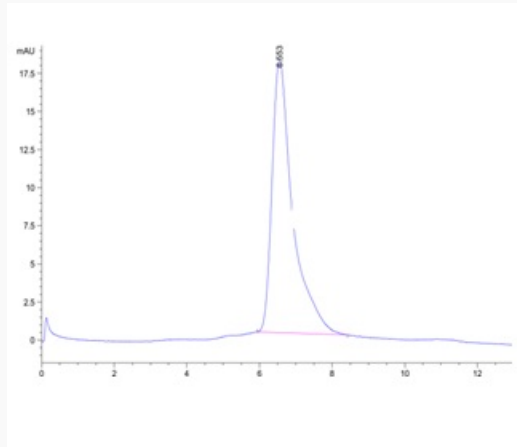
Tel: 1-631-559-9269 1-516-512-3133

Email: [info@creative-biomart.com](mailto:info@creative-biomart.com) Fax: 1-631-938-8127

45-1 Ramsey Road, Shirley, NY 11967, USA



HPLC data



Tel: 1-631-559-9269 1-516-512-3133

Email: [info@creative-biomart.com](mailto:info@creative-biomart.com) Fax: 1-631-938-8127

45-1 Ramsey Road, Shirley, NY 11967, USA