

Recombinant Human FAS Full Length Transmembrane protein, His-tagged

Cat. No. FAS-2374H **Lot. No.** (See product label)

SPECIFICATION

Product Overview	Recombinant Human FAS protein(P25445)(26-335aa), fused to N-terminal His tag, was expressed in E. coli.
Species	Human
Source	E.coli
ProteinLength	26-335aa
Form	If the delivery form is liquid, the default storage buffer is Tris/PBS-based buffer, 5%-50% glycerol. If the delivery form is lyophilized powder, the buffer before lyophilization is Tris/PBS-based buffer, 6% Trehalose, pH 8.0.
Molecular Mass	40.6 kDa
AA Sequence	QVTDINSKGLELRKTVTTVETQNLEGLHHDGQFCHKPCPPGERKARDCTVNGDEPD CVPCQEGKEYTDKAHFSSKCRRCRLCDEGHGLEVEINCTRTQNTKCRCKPNFFCN STVCEHCDPCTKCEHGIIKECTLTSNTKCKEEGSRSNLWLCLLLLPIPLIVWVKRKE VQKTCRKHRENQGSHEPSTLNPETVAINLSVDLSKYITTIAGVMTLSQVKGfVRK NGVNEAKIDEIKNDNVQDTAEQKVQLLRNWHQLHGKKEAYDTLIKDLKKANLCTLAE KIQTIIKLDITSDSENSNFRNEIQSLV
Purity	Greater than 85% as determined by SDS-PAGE.

 Tel: 1-631-559-9269 1-516-512-3133

 Email: info@creative-biomart.com  Fax: 1-631-938-8127

 45-1 Ramsey Road, Shirley, NY 11967, USA

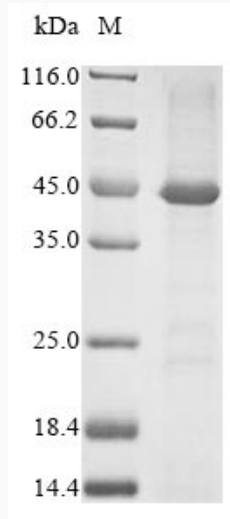
Storage	Store at -20°C/-80°C upon receipt, aliquoting is necessary for mutiple use. Avoid repeated freeze-thaw cycles.
Reconstitution	Please reconstitute protein in deionized sterile water to a concentration of 0.1-1.0 mg/mL. We recommend to add 5-50% of glycerol (final concentration) and aliquot for long-term storage at -20°C/-80°C. Our default final concentration of glycerol is 50%.
GENE INFORMATION	
Gene Name	FAS Fas (TNF receptor superfamily, member 6) [Homo sapiens]
Official Symbol	FAS
Synonyms	FAS; Fas (TNF receptor superfamily, member 6); APT1, FAS1, TNFRSF6, tumor necrosis factor receptor superfamily, member 6; tumor necrosis factor receptor superfamily member 6; APO 1; CD95; Fas AMA; FAS 827dupA; CD95 antigen; FASLG receptor; apoptosis antigen 1; Delta Fas/APO-1/CD95; APO-1 cell surface antigen; apoptosis-mediating surface antigen FAS; tumor necrosis factor receptor superfamily, member 6; APT1; FAS1; APO-1; FASTM; ALPS1A; TNFRSF6;
Gene ID	355
mRNA Refseq	NM_000043
Protein Refseq	NP_000034
MIM	134637
UniProt ID	P25445

 Tel: 1-631-559-9269 1-516-512-3133

 Email: info@creative-biomart.com  Fax: 1-631-938-8127

 45-1 Ramsey Road, Shirley, NY 11967, USA

SDS-PAGE



 Tel: 1-631-559-9269 1-516-512-3133

 Email: info@creative-biomart.com  Fax: 1-631-938-8127

 45-1 Ramsey Road, Shirley, NY 11967, USA