

Recombinant Cattle FAS protein, His & T7-tagged

Cat. No. FAS-613C Lot. No. (See product label)

SPECIFICATION

Product Overview	Recombinant Cattle FAS (P51867) aa. (Leu37~Tyr274) fused with N-terminal His & T7 tag was produced in E. coli cells.
Species	Cattle
Source	E.coli
ProteinLength	Leu37~Tyr274
Form	Freeze-dried powder
Molecular Mass	27kDa as determined by SDS-PAGE reducing conditions
Endotoxin	<1.0EU per 1g (determined by the LAL method)
Purity	> 95%
Characteristic	The isoelectric point is 6.5.
Applications	SDS-PAGE; WB; ELISA; IP.
Stability	The thermal stability is described by the loss rate. The loss rate was determined by accelerated thermal degradation test, that is, incubate the protein at 37°C for 48h, and no obvious degradation and precipitation were observed. The loss rate is less than 5% within the expiration date under appropriate storage condition.

 Tel: 1-631-559-9269 1-516-512-3133

 Email: info@creative-biomart.com  Fax: 1-631-938-8127

 45-1 Ramsey Road, Shirley, NY 11967, USA

Storage	Avoid repeated freeze/thaw cycles. Store at 2-8°C for one month. Aliquot and store at -80°C for 12 months.
Storage buffer	PBS, pH7.4, containing 5% sucrose, 0.01% sarcosyl.
Reconstitution	Reconstitute in sterile PBS, pH7.2-pH7.4

GENE INFORMATION

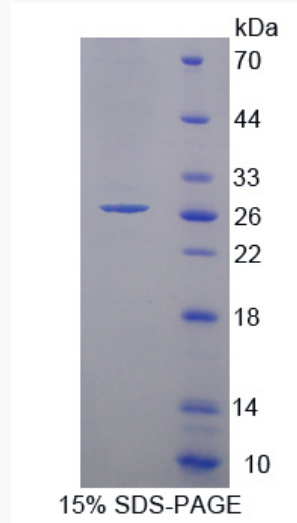
Gene Name	FAS Fas cell surface death receptor [Bos taurus (cattle)]
Official Symbol	FAS
Synonyms	FAS; Fas cell surface death receptor; APO1; TNFRSF6; tumor necrosis factor receptor superfamily member 6; FASLG receptor; Fas (TNF receptor superfamily, member 6); apo-1 antigen; apoptosis (APO-1) antigen 1 (FAS), member 6; apoptosis-mediating surface antigen FAS; tumor necrosis factor receptor superfamily, member 6
Gene ID	282488
mRNA Refseq	NM_174662.2
Protein Refseq	NP_777087.1
UniProt ID	P51867

 Tel: 1-631-559-9269 1-516-512-3133

 Email: info@creative-biomart.com  Fax: 1-631-938-8127

 45-1 Ramsey Road, Shirley, NY 11967, USA

SDS-PAGE



 Tel: 1-631-559-9269 1-516-512-3133

 Email: info@creative-biomart.com  Fax: 1-631-938-8127

 45-1 Ramsey Road, Shirley, NY 11967, USA