

Active Recombinant Human FASLG Protein, His-tagged

Cat. No. FASLG-1395H Lot. No. (See product label)

SPECIFICATION

Product Overview	Active Recombinant Human FASLG Protein(NP_000630.1) (Pro134-Leu281) was expressed in Yeast with a polyhistidine tag at the N-terminus.
Species	Human
Source	Yeast
ProteinLength	134-281 aa
Form	Lyophilized from sterile PBS, pH 7.4.
Bio-activity	1. Measured by its binding ability in a functional ELISA. Immobilized human His-FASLG at 10 µg/ml (100 µl/well) can bind Cynomolgus FAS-Fc. The EC50 of Cynomolgus FAS-Fc is 0.06-0.14 µg/ml. 2. Immobilized human His-FASLG at 10 µg/ml (100 µl/well) can bind rat FAS-Fc. The EC50 of rat FAS-Fc is 0.22-0.52 µg/ml.
Molecular Mass	The recombinant human human FASLG consists of 168 amino acids and predicts a molecular mass of 19.3 KDa. It migrates as an approximately 26 KDa band in SDS-PAGE under reducing conditions.
Purity	> 90 % as determined by SDS-PAGE
Storage	Store it under sterile conditions at -20°C to -80°C upon receiving. Recommend to aliquot the protein into smaller quantities for optimal storage. Avoid repeated freeze-thaw cycles.

 Tel: 1-631-559-9269 1-516-512-3133

 Email: info@creative-biomart.com  Fax: 1-631-938-8127

 45-1 Ramsey Road, Shirley, NY 11967, USA

Reconstitution It is recommended that sterile water be added to the vial to prepare a stock solution of 0.2 ug/ul. Centrifuge the vial at 4°C before opening to recover the entire contents.

GENE INFORMATION

Gene Name FASLG Fas ligand (TNF superfamily, member 6) [Homo sapiens]

Official Symbol FASLG

Synonyms FASLG; Fas ligand (TNF superfamily, member 6); APT1LG1, TNFSF6, tumor necrosis factor (ligand) superfamily, member 6; tumor necrosis factor ligand superfamily member 6; CD178; FasL; APTL; CD95 ligand; fas antigen ligand; apoptosis antigen ligand; apoptosis (APO-1) antigen ligand 1; tumor necrosis factor (ligand) superfamily, member 6; FASL; CD95L; CD95-L; TNFSF6; APT1LG1;

Gene ID 356

mRNA Refseq NM_000639

Protein Refseq NP_000630

MIM 134638

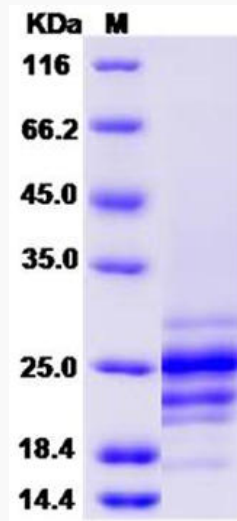
UniProt ID P48023

 Tel: 1-631-559-9269 1-516-512-3133

 Email: info@creative-biomart.com  Fax: 1-631-938-8127

 45-1 Ramsey Road, Shirley, NY 11967, USA

SDS-PAGE



 Tel: 1-631-559-9269 1-516-512-3133

 Email: info@creative-biomart.com  Fax: 1-631-938-8127

 45-1 Ramsey Road, Shirley, NY 11967, USA