

Recombinant Human FASLG protein, His-tagged

Cat. No. FASLG-1396H Lot. No. (See product label)

SPECIFICATION

Product Overview	Recombinant Human FASLG protein(AAH17502.1)(Pro134-Leu281), fused with N-terminal His tag, was expressed in HEK293.
Species	Human
Source	HEK293
ProteinLength	Pro134-Leu281
Tag	N-His
Form	Lyophilized from 0.22µm filtered solution in PBS (pH 7.4). Normally 8% trehalose is added as protectant before lyophilization.
Bio-activity	Immobilized Human Fas Ligand, His Tag at 2ug/ml (100ul/Well) on the plate. Dose response curve for Human Fas, hFc Tag with the EC50 of 75.0ng/ml determined by ELISA.
Molecular Mass	The protein has a predicted MW of 18 kDa. Due to glycosylation, the protein migrates to 20-35 kDa based on Tris-Bis PAGE result.
Endotoxin	Less than 1EU per µg by the LAL method.
Purity	> 95% as determined by Tris-Bis PAGE

 Tel: 1-631-559-9269 1-516-512-3133

 Email: info@creative-biomart.com  Fax: 1-631-938-8127

 45-1 Ramsey Road, Shirley, NY 11967, USA

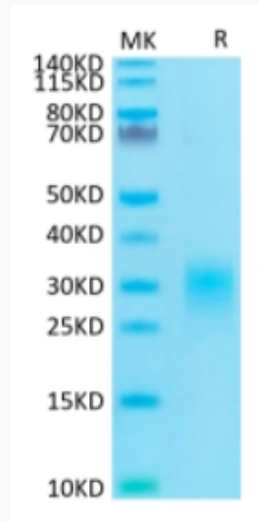
Storage	Reconstituted protein stable at -80°C for 12 months, 4°C for 1 week. Use a manual defrost freezer and avoid repeated freeze-thaw cycles.
Reconstitution	Centrifuge tubes before opening. Reconstituting to a concentration more than 100 µg/ml is recommended. Dissolve the lyophilized protein in distilled water.
GENE INFORMATION	
Gene Name	FASLG Fas ligand (TNF superfamily, member 6) [Homo sapiens]
Official Symbol	FASLG
Synonyms	FASLG; Fas ligand (TNF superfamily, member 6); APT1LG1, TNFSF6, tumor necrosis factor (ligand) superfamily, member 6; tumor necrosis factor ligand superfamily member 6; CD178; FasL; APTL; CD95 ligand; fas antigen ligand; apoptosis antigen ligand; apoptosis (APO-1) antigen ligand 1; tumor necrosis factor (ligand) superfamily, member 6; FASL; CD95L; CD95-L; TNFSF6; APT1LG1;
Gene ID	356
mRNA Refseq	NM_000639
Protein Refseq	NP_000630
MIM	134638
UniProt ID	P48023

 Tel: 1-631-559-9269 1-516-512-3133

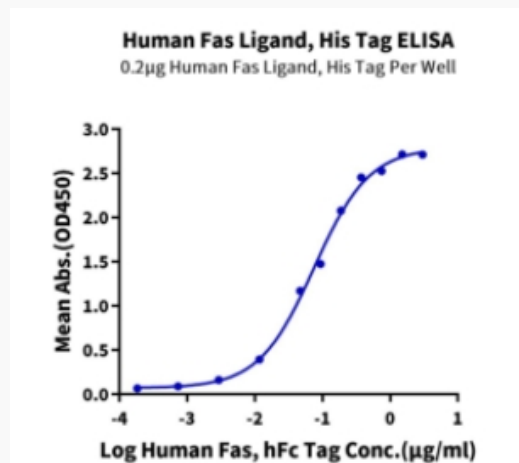
 Email: info@creative-biomart.com  Fax: 1-631-938-8127

 45-1 Ramsey Road, Shirley, NY 11967, USA

Tris-Bis PAGE



ELISA Data



 Tel: 1-631-559-9269 1-516-512-3133

 Email: info@creative-biomart.com  Fax: 1-631-938-8127

 45-1 Ramsey Road, Shirley, NY 11967, USA