

Recombinant Human FBLN5 Protein (Leu99-Cys205), N-His tagged

Cat. No. FBLN5-3426H Lot. No. (See product label)

SPECIFICATION

Product Overview

Recombinant human FBLN5 (Leu99-Cys205) protein fused with the N-His tag was expressed in E. coli.

Species

Human

Source

E.coli

ProteinLength

Leu99-Cys205

Description

The protein encoded by this gene is a secreted, extracellular matrix protein containing an Arg-Gly-Asp (RGD) motif and calcium-binding EGF-like domains. It promotes adhesion of endothelial cells through interaction of integrins and the RGD motif. It is prominently expressed in developing arteries but less so in adult vessels. However, its expression is reinduced in balloon-injured vessels and atherosclerotic lesions, notably in intimal vascular smooth muscle cells and endothelial cells. Therefore, the protein encoded by this gene may play a role in vascular development and remodeling. Defects in this gene are a cause of autosomal dominant cutis laxa, autosomal recessive cutis laxa type I (CL type I), and age-related macular degeneration type 3 (ARMD3).

Molecular Mass

14.15 kDa

Purity

>90 % as determined by SDS-PAGE.

 Tel: 1-631-559-9269 1-516-512-3133

 Email: info@creative-biomart.com  Fax: 1-631-938-8127

 45-1 Ramsey Road, Shirley, NY 11967, USA

Notes	For research use only.
Storage	Use a manual defrost freezer and avoid repeated freeze thaw cycles. Store at 2 to 8 centigrade for one week. Store at -20 to -80 centigrade for twelve months from the date of receipt.
Storage Buffer	0.01M PBS, pH 7.4, 0.02 % NLS
Reconstitution	Reconstitute in sterile water for a stock solution.
Shipping	In general, proteins are provided as lyophilized powder/frozen liquid. They are shipped out with dry ice/blue ice unless customers require otherwise.

GENE INFORMATION

Gene Name	FBLN5 fibulin 5 [Homo sapiens (human)]
Official Symbol	FBLN5
Synonyms	FBLN5; fibulin 5; EVEC; UP50; ADCL2; ARMD3; CMT1H; DANCE; ARCL1A; FIBL-5; HNARMD; fibulin-5; developmental arteries and neural crest EGF-like protein; embryonic vascular EGF-like repeat-containing protein; testis tissue sperm-binding protein Li 75n; urine p50 protein
Gene ID	10516
mRNA Refseq	NM_006329
Protein Refseq	NP_006320
MIM	604580

 Tel: 1-631-559-9269 1-516-512-3133

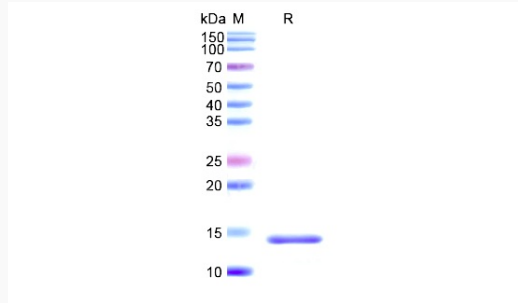
 Email: info@creative-biomart.com  Fax: 1-631-938-8127

 45-1 Ramsey Road, Shirley, NY 11967, USA

UniProt ID

Q9UBX5

SDS-PAGE



 Tel: 1-631-559-9269 1-516-512-3133

 Email: info@creative-biomart.com  Fax: 1-631-938-8127

 45-1 Ramsey Road, Shirley, NY 11967, USA