

Recombinant Human Fructose-1,6-bisphosphatase 1, His-tagged

Cat. No. FBP1-1815H **Lot. No.** (See product label)

SPECIFICATION

Product Overview Recombinant human FBP1 protein, fused to His-tag at N-terminus, was expressed in *E.coli* and purified by using conventional chromatography techniques. MW = 39.0 kDa (358aa).

Species Human

Source E.coli

Description Fructose-1,6-bisphosphatase 1 (FBP1) is a gluconeogenesis regulatory enzyme, catalyzes the hydrolysis of fructose 1,6-bisphosphate to fructose 6-phosphate and inorganic phosphate. Fructose-1,6-diphosphatase deficiency is associated with hypoglycemia and metabolic acidosis.


Amino Acid Sequence

MGSSHHHHH SSGLVPRGSH MADQAPFDTD VNTLTRFVME EGRKARGTGE
 LTQLLNSLCT AVKAISSAVR KAGIAHLYGI AGSTNVTGDQ VKKLDVLSND
 LVMNMLKSSF ATCVLVSEED KHAIIVEPEK RGKYVVCDFD LDGSSNIDCL
 VSVGTFIGIY RKKSTDEPSE KDALQPGRNL VAAGYALYGS ATMLVLAMDC
 GVNCFMLDPA IGEFILVDKD VKIKKKGKIY SLNEGYARDF DPAVTEYIQR
 KKFPPDNSAP YGARYVGSMV ADVHRTLVIY GIFYLPANKK SPNGKLRLLY
 ECNPMAYVME KAGGMATTGK EAVLDVIPTD IHQRAPVILG SPDDVLEFLK
 VYEKHSQAQ

Form Liquid. In 20 mM Tris-HCl buffer (pH8.0) containing 1mM DTT 10% glycerol.

 Tel: 1-631-559-9269 1-516-512-3133

 Email: info@creative-biomart.com  Fax: 1-631-938-8127

 45-1 Ramsey Road, Shirley, NY 11967, USA

Purity	> 90% by SDS – PAGE.
Concentration	1 mg/ml (determined by Bradford assay).
Storage	Can be stored at +4°C short term (1-2 weeks). For long term storage, aliquot and store at -20°C or -70°C. Avoid repeated freezing and thawing cycles.

GENE INFORMATION

Gene Name	FBP1 fructose-1,6-bisphosphatase 1 [Homo sapiens]
Synonyms	FBP1; fructose-1,6-bisphosphatase 1; FBP; FBPase 1; fructose-bisphosphatase 1; growth-inhibiting protein 17; D-fructose-1,6-bisphosphate 1-phosphohydrolase 1; EC 3.1.3.11; OTTHUMP00000021694
Gene ID	2203
mRNA Refseq	NM_000507
Protein Refseq	NP_000498
MIM	611570
UniProt ID	P09467
Chromosome Location	9q22.3
Pathway	Fructose and mannose metabolism; Glycolysis / Gluconeogenesis; Insulin signaling pathway; Metabolic pathways; Pentose phosphate pathway

 Tel: 1-631-559-9269 1-516-512-3133

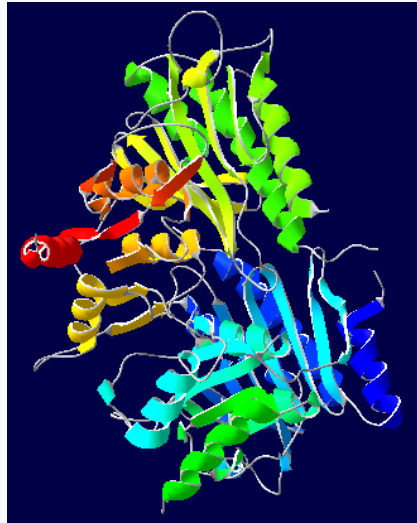
 Email: info@creative-biomart.com  Fax: 1-631-938-8127

 45-1 Ramsey Road, Shirley, NY 11967, USA

Function

fructose 1,6-bisphosphate 1-phosphatase activity; fructose-2,6-bisphosphate 2-phosphatase activity; hydrolase activity; identical protein binding; magnesium ion binding; monosaccharide binding; phosphoric ester hydrolase activity

**fructose-1,6-
bisphosphatase 1**



 Tel: 1-631-559-9269 1-516-512-3133

 Email: info@creative-biomart.com  Fax: 1-631-938-8127

 45-1 Ramsey Road, Shirley, NY 11967, USA