

Recombinant Human FBP1 Protein, Myc/DDK-tagged, C13 and N15-labeled

Cat. No. FBP1-2335H Lot. No. (See product label)

SPECIFICATION

Product Overview	FBP1 MS Standard C13 and N15-labeled recombinant protein (NP_000498) with a C-terminal MYC/DDK tag, was expressed in HEK293 cells.
Species	Human
Source	HEK293
Description	Fructose-1,6-bisphosphatase 1, a gluconeogenesis regulatory enzyme, catalyzes the hydrolysis of fructose 1,6-bisphosphate to fructose 6-phosphate and inorganic phosphate. Fructose-1,6-diphosphatase deficiency is associated with hypoglycemia and metabolic acidosis.
Molecular Mass	36.8 kDa
AA Sequence	MADQAPFDTDVNTLTRFVMEEGRKARGTGELTQLLNSLCTAVKAISSAVRKAGIAHL YGIAGSTNVTGDQVKKLDVLSNDLVMNMLKSSFATCVLVSEEDKHAIIVEPEKRGKY VVCFDPLDGSSNIDCLVSVGTIFGIYRKKSTDEPSEKDALQPGRNLVAAGYALYGSA TMLVLAMDCGVNCFMLDPAIGEFILVDKDVKIKKKGKIYSLNEGYARDFDPAVTEYIQ RKKFPPDNSAPYGARYVGSMAVHVHRTLVIYGGIFLYPANKKSPNGKLRLLYECNPM AYVMEKAGGMATTGKEAVLDVIPTDIHQRAPVILGSPDDVLEFLKVYEKHSQAQTRTR PLEQKLISEEDLAANDILDYKDDDDKV
Purity	> 80% as determined by SDS-PAGE and Coomassie blue staining

Tel: 1-631-559-9269 1-516-512-3133

Email: info@creative-biomart.com Fax: 1-631-938-8127

45-1 Ramsey Road, Shirley, NY 11967, USA

Stability	Stable for 3 months from receipt of products under proper storage and handling conditions.
Storage	Store at -80 centigrade. Avoid repeated freeze-thaw cycles.
Concentration	50 µg/mL as determined by BCA
Storage Buffer	100 mM glycine, 25 mM Tris-HCl, pH 7.3.

GENE INFORMATION

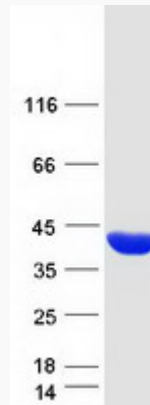
Gene Name	FBP1 fructose-1,6-bisphosphatase 1 [Homo sapiens (human)]
Official Symbol	FBP1
Synonyms	FBP1; fructose-1,6-bisphosphatase 1; FBP; FBPase 1; fructose-bisphosphatase 1; growth-inhibiting protein 17; D-fructose-1,6-bisphosphate 1-phosphohydrolase 1;
Gene ID	2203
mRNA Refseq	NM_000507
Protein Refseq	NP_000498
MIM	611570
UniProt ID	P09467

 Tel: 1-631-559-9269 1-516-512-3133

 Email: info@creative-biomart.com  Fax: 1-631-938-8127

 45-1 Ramsey Road, Shirley, NY 11967, USA

SDS-PAGE



 Tel: 1-631-559-9269 1-516-512-3133

 Email: info@creative-biomart.com  Fax: 1-631-938-8127

 45-1 Ramsey Road, Shirley, NY 11967, USA