

Recombinant Human FBP1 Protein (Ala2-Gln338), C-His tagged

Cat. No. FBP1-2427H Lot. No. (See product label)

SPECIFICATION

Product Overview	Recombinant human FBP1 (Ala2-Gln338) protein fused with the C-terminal His tag was expressed in E. coli.
Species	Human
Source	E.coli
ProteinLength	Ala2-Gln338
Molecular Mass	37.07 kDa
Purity	>90 % as determined by SDS-PAGE.
Notes	For research use only.
Storage	Use a manual defrost freezer and avoid repeated freeze thaw cycles. Store at 2 to 8 centigrade for one week. Store at -20 to -80 centigrade for twelve months from the date of receipt.
Storage Buffer	Supplied as solution form in PBS or lyophilized from PBS.
Reconstitution	Reconstitute in sterile water for a stock solution.
Shipping	In general, proteins are provided as lyophilized powder/frozen liquid. They are

 Tel: 1-631-559-9269 1-516-512-3133

 Email: info@creative-biomart.com  Fax: 1-631-938-8127

 45-1 Ramsey Road, Shirley, NY 11967, USA



shipped out with dry ice/blue ice unless customers require otherwise.

GENE INFORMATION

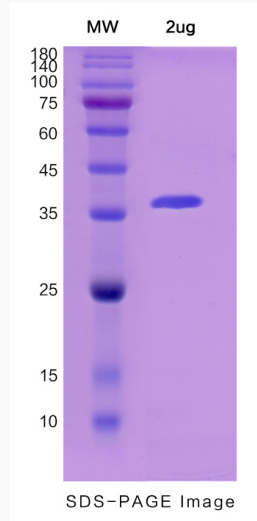
Gene Name	FBP1 fructose-1,6-bisphosphatase 1 [Homo sapiens (human)]
Official Symbol	FBP1
Synonyms	FBP1; fructose-1,6-bisphosphatase 1; FBP; FBPase 1; fructose-bisphosphatase 1; growth-inhibiting protein 17; D-fructose-1,6-bisphosphate 1-phosphohydrolase 1;
Gene ID	2203
mRNA Refseq	NM_000507
Protein Refseq	NP_000498
MIM	611570
UniProt ID	P09467

 Tel: 1-631-559-9269 1-516-512-3133

 Email: info@creative-biomart.com  Fax: 1-631-938-8127

 45-1 Ramsey Road, Shirley, NY 11967, USA

SDS-PAGE



 Tel: 1-631-559-9269 1-516-512-3133

 Email: info@creative-biomart.com  Fax: 1-631-938-8127

 45-1 Ramsey Road, Shirley, NY 11967, USA