

# Recombinant Full Length Human FBP1 Protein, C-Flag-tagged

Cat. No. FBP1-863HFL    Lot. No. (See product label)

## SPECIFICATION

<b>Product Overview</b>	Recombinant Full Length Human FBP1 Protein, fused to Flag-tag at C-terminus, was expressed in Mammalian cells.
<b>Species</b>	Human
<b>Source</b>	Mammalian Cells
<b>Description</b>	Fructose-1,6-bisphosphatase 1, a gluconeogenesis regulatory enzyme, catalyzes the hydrolysis of fructose 1,6-bisphosphate to fructose 6-phosphate and inorganic phosphate. Fructose-1,6-diphosphatase deficiency is associated with hypoglycemia and metabolic acidosis.
<b>Form</b>	25 mM Tris HCl, pH 7.3, 100 mM glycine, 10% glycerol.
<b>Molecular Mass</b>	36.7 kDa
<b>AA Sequence</b>	MADQAPFDTDVNTLTRFVMEEGRKARGTGELTQLLNSLCTAVKAISSAVRKAGIAHL YGIAGSTNVTGDQ VKKLDVLSNDLVMNMLKSSFATCVLVSEEDKHAIIVEPEKRGKY VVCFDPLDGSSNIDCLVSVGTIFGIY RKKSTDEPSEKDALQPGRNLVAAGYALYGSA TMLVLAMDCGVNCFMLDPAIGEFILVDKDVKIKKKGKIY SLNEGYARDFDPAVTEYIQ RKKFPPDNSAPYGARYVGSMAVADVHRTLVIYGGIFLYPANKKSPNGKLRLLY ECNPMAYVMEKAGGMATTGKEAVLDVIPTDIHQRAPVILGSPDDVLEFLKVYEKHS A QTRTRPLEQKLISEEDLAANDILDYKDDDDKV
<b>Purity</b>	> 80% as determined by SDS-PAGE and Coomassie blue staining.

 Tel: 1-631-559-9269    1-516-512-3133

 Email: [info@creative-biomart.com](mailto:info@creative-biomart.com)     Fax: 1-631-938-8127

 45-1 Ramsey Road, Shirley, NY 11967, USA

<b>Stability</b>	Stable for 12 months from the date of receipt of the product under proper storage and handling conditions. Avoid repeated freeze-thaw cycles.
<b>Storage</b>	Store at -80 centigrade.
<b>Concentration</b>	>50 ug/mL as determined by microplate BCA method.
<b>Preparation</b>	Recombinant protein was captured through anti-DDK affinity column followed by conventional chromatography steps.
<b>Protein Families</b>	Druggable Genome, Stem cell - Pluripotency
<b>Protein Pathways</b>	Fructose and mannose metabolism, Glycolysis / Gluconeogenesis, Insulin signaling pathway, Metabolic pathways, Pentose phosphate pathway
<b>Full Length</b>	Full L.

## GENE INFORMATION

<b>Gene Name</b>	<a href="#">FBP1 fructose-bisphosphatase 1 [ Homo sapiens (human) ]</a>
<b>Official Symbol</b>	<a href="#">FBP1</a>
<b>Synonyms</b>	FBP
<b>Gene ID</b>	<a href="#">2203</a>
<b>mRNA Refseq</b>	<a href="#">NM_000507.4</a>
<b>Protein Refseq</b>	<a href="#">NP_000498.2</a>

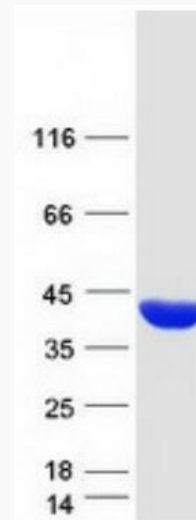
 Tel: 1-631-559-9269 1-516-512-3133

 Email: [info@creative-biomart.com](mailto:info@creative-biomart.com)  Fax: 1-631-938-8127

 45-1 Ramsey Road, Shirley, NY 11967, USA

**MIM** 611570

**UniProt ID** P09467



Coomassie blue staining of purified FBP1 protein.

 Tel: 1-631-559-9269 1-516-512-3133

 Email: [info@creative-biomart.com](mailto:info@creative-biomart.com)  Fax: 1-631-938-8127

 45-1 Ramsey Road, Shirley, NY 11967, USA