

# Recombinant Human FBP2 Protein, Myc/DDK-tagged, C13 and N15-labeled

**Cat. No.** FBP2-1110H    **Lot. No.** (See product label)

## SPECIFICATION

<b>Product Overview</b>	FBP2 MS Standard C13 and N15-labeled recombinant protein (NP_003828) with a C-terminal MYC/DDK tag, was expressed in HEK293 cells.
<b>Species</b>	Human
<b>Source</b>	HEK293
<b>Description</b>	This gene encodes a gluconeogenesis regulatory enzyme which catalyzes the hydrolysis of fructose 1,6-bisphosphate to fructose 6-phosphate and inorganic phosphate.
<b>Molecular Mass</b>	36.8 kDa
<b>AA Sequence</b>	MTDRSPFETDMLTLTRYVMEKGRQAKGTGELTQLLNSMLTAIKAISSAVRKAGLAHL YGIAGSVNVTGDEVKKLDVLSNSLVINMLQSSYSTCVLVSEENKDAITAKEKRGKYV VCFDPLDGSSNIDCLASIGTIFAIYRKTSEDEPSEKDALQCGRNIVAAGYALYGSATLV ALSTGQGVDLFMLDPALGEFVLVEKDVKIKKKGKIYSLNEGYAKYFDAATTEYVQKK KFPEDGSAPYGARYVGSMAVDVHRTLTVYGGIFLYPANQKSPKGKLRLLYECNPVAYI IEQAGGLATTGTQPVLDVKPEAIHQRVPLILGSPEDVQEYLTVCVQKNQAGSTRTRPL EQKLISEEDLAANDILDYKDDDDKV
<b>Purity</b>	> 80% as determined by SDS-PAGE and Coomassie blue staining
<b>Stability</b>	Stable for 3 months from receipt of products under proper storage and handling

 Tel: 1-631-559-9269    1-516-512-3133

 Email: [info@creative-biomart.com](mailto:info@creative-biomart.com)     Fax: 1-631-938-8127

 45-1 Ramsey Road, Shirley, NY 11967, USA

conditions.

**Storage** Store at -80 centigrade. Avoid repeated freeze-thaw cycles.

**Concentration** 50 µg/mL as determined by BCA

**Storage Buffer** 100 mM glycine, 25 mM Tris-HCl, pH 7.3.

## GENE INFORMATION

**Gene Name** FBP2 fructose-1,6-bisphosphatase 2 [ Homo sapiens (human) ]

**Official Symbol** FBP2

**Synonyms** FBP2; fructose-1,6-bisphosphatase 2; fructose-1,6-bisphosphatase isozyme 2; FBPase 2; hexosediphosphatase; muscle fructose-bisphosphatase; D-fructose-1,6-bisphosphate 1-phosphohydrolase 2; MGC142192;

**Gene ID** 8789

**mRNA Refseq** NM\_003837

**Protein Refseq** NP\_003828

**MIM** 603027

**UniProt ID** O00757

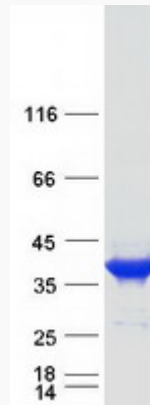
 Tel: 1-631-559-9269 1-516-512-3133

 Email: [info@creative-biomart.com](mailto:info@creative-biomart.com)  Fax: 1-631-938-8127

 45-1 Ramsey Road, Shirley, NY 11967, USA



SDS-PAGE



Tel: 1-631-559-9269 1-516-512-3133

Email: [info@creative-biomart.com](mailto:info@creative-biomart.com) Fax: 1-631-938-8127

45-1 Ramsey Road, Shirley, NY 11967, USA