

Recombinant Human FBP2 Protein, GST-tagged

Cat. No. FBP2-3881H Lot. No. (See product label)

SPECIFICATION

Product Overview	Human FBP2 full-length ORF (NP_003828.2, 1 a.a. - 339 a.a.) recombinant protein with GST-tag at N-terminal.
Species	Human
Source	Wheat Germ
Description	This gene encodes a gluconeogenesis regulatory enzyme which catalyzes the hydrolysis of fructose 1,6-bisphosphate to fructose 6-phosphate and inorganic phosphate. [provided by RefSeq, Jul 2008]
Molecular Mass	63.1 kDa
AA Sequence	MTDRSPFETDMLTLTRYVMEKGRQAKGTGELTQLLNSMLTAIKAISSAVRKAGLAHL YGIAGSVNVTGDEVKLDVLSNSLVINMVQSSYSTCVLVSEENKDAITAKEKRGKYV VCFDPLDGSSNIDCLASIGTIFAIYRKTSEDEPSEKDALQCGRNIVAAGYALYGSATLV ALSTGQGVDLFDLDPALGEFVLVEKDVKIKKKGKIYSLNEGYAKYFDAATTEYVQKK KFPEDGSAPYGARYVGSMAVDVHRTLVIYGGIFLYPANQKSPKGKLRLLYECNPVAYI IEQAGGLATTGTQPVLDVKPEAIHQRVPLILGSPEDVQEYLTVCVQKNQAGS
Applications	Enzyme-linked Immunoabsorbent Assay Western Blot (Recombinant protein) Antibody Production Protein Array

 Tel: 1-631-559-9269 1-516-512-3133

 Email: info@creative-biomart.com  Fax: 1-631-938-8127

 45-1 Ramsey Road, Shirley, NY 11967, USA

Notes	Best use within three months from the date of receipt of this protein.
Storage	Store at -80 centigrade. Aliquot to avoid repeated freezing and thawing.
Storage Buffer	50 mM Tris-HCl, 10 mM reduced Glutathione, pH=8.0 in the elution buffer.

GENE INFORMATION

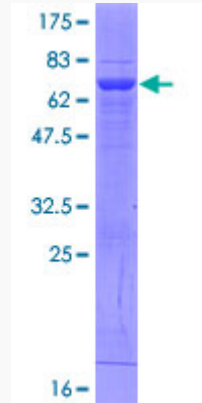
Gene Name	FBP2 fructose-1,6-bisphosphatase 2 [Homo sapiens]
Official Symbol	FBP2
Synonyms	FBP2; fructose-1,6-bisphosphatase 2; fructose-1,6-bisphosphatase isozyme 2; FBPase 2; hexosediphosphatase; muscle fructose-bisphosphatase; D-fructose-1,6-bisphosphate 1-phosphohydrolase 2; MGC142192;
Gene ID	8789
mRNA Refseq	NM_003837
Protein Refseq	NP_003828
MIM	603027
UniProt ID	O00757

 Tel: 1-631-559-9269 1-516-512-3133

 Email: info@creative-biomart.com  Fax: 1-631-938-8127

 45-1 Ramsey Road, Shirley, NY 11967, USA

**Quality Control
Testing**



12.5% SDS-PAGE Stained with Coomassie Blue.

 Tel: 1-631-559-9269 1-516-512-3133

 Email: info@creative-biomart.com  Fax: 1-631-938-8127

 45-1 Ramsey Road, Shirley, NY 11967, USA