

Recombinant Human FBXO15 Protein, GST-tagged

Cat. No. FBXO15-3915H Lot. No. (See product label)

SPECIFICATION

Product Overview	Human FBXO15 full-length ORF (NP_689889.1, 1 a.a. - 434 a.a.) recombinant protein with GST-tag at N-terminal.
Species	Human
Source	Wheat Germ
Description	Members of the F-box protein family, such as FBXO15, are characterized by an approximately 40-amino acid F-box motif. SCF complexes, formed by SKP1 (MIM 601434), cullin (see CUL1; MIM 603134), and F-box proteins, act as protein-ubiquitin ligases. F-box proteins interact with SKP1 through the F box, and they interact with ubiquitination targets through other protein interaction domains (Jin et al., 2004 [PubMed 15520277]).[supplied by OMIM, Mar 2008]
Molecular Mass	75.9 kDa
AA Sequence	MPSEILLKIFSYLDAVSLCTGCVSRRFYHLANDNFIWIGIYSTAFSPARSNWKFNSVE KIAMSMSFLSVQDKEAGYWKKEYITKQIASVKAALADILKPVNPYTGLPVKTKEALRIF GLGWAILKEKGGKEYIMEHVDLSINDTSVTVIWYGKKWPCLASLSTLDLCGMTPVFT DWYKTPTKHRLRWHSLIAKYNLSHLTISTMIGCDRLIRIFCLHPGLLVGVWKKEEELA FVMANLHFHHLVERSTLGSATIPYELPPHSPFLDDSPHYGLHGYQLHVDLHSGGVFY LCGTFRNLFTRKRNIEGHVVKLIVIHLLKNNREHLPLIGKVGLSWKTDIFDGCISCSM MDVTLLDEHGKPFWCFSSPVCLRSPATPSDSSSFLGQTYNVDYVDAEGRVHVELV WIRETEEYLIVNLVLYLSIAKINHWFGEY

 Tel: 1-631-559-9269 1-516-512-3133

 Email: info@creative-biomart.com  Fax: 1-631-938-8127

 45-1 Ramsey Road, Shirley, NY 11967, USA

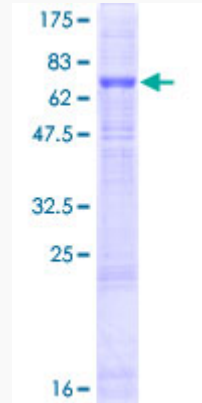
Applications	Enzyme-linked Immunoabsorbent Assay Western Blot (Recombinant protein) Antibody Production Protein Array
Notes	Best use within three months from the date of receipt of this protein.
Storage	Store at -80 centigrade. Aliquot to avoid repeated freezing and thawing.
Storage Buffer	50 mM Tris-HCl, 10 mM reduced Glutathione, pH=8.0 in the elution buffer.
GENE INFORMATION	
Gene Name	FBXO15 F-box protein 15 [Homo sapiens]
Official Symbol	FBXO15
Synonyms	FBXO15; F-box protein 15; F box only protein 15; F-box only protein 15; FBX15; MGC39671;
Gene ID	201456
mRNA Refseq	NM_001142958
Protein Refseq	NP_001136430
MIM	609093
UniProt ID	Q8NCQ5

 Tel: 1-631-559-9269 1-516-512-3133

 Email: info@creative-biomart.com  Fax: 1-631-938-8127

 45-1 Ramsey Road, Shirley, NY 11967, USA

**Quality Control
Testing**



12.5% SDS-PAGE Stained with Coomassie Blue.

 Tel: 1-631-559-9269 1-516-512-3133

 Email: info@creative-biomart.com  Fax: 1-631-938-8127

 45-1 Ramsey Road, Shirley, NY 11967, USA