

Recombinant Human FBXW7 Protein, GST-tagged

Cat. No. FBXW7-3975H **Lot. No.** (See product label)

SPECIFICATION

Product Overview	Human FBXW7 full-length ORF (BAA91986.1, 1 a.a. - 553 a.a.) recombinant protein with GST tag at N-terminal.
Species	Human
Source	Wheat Germ
Description	<p>This gene encodes a member of the F-box protein family which is characterized by an approximately 40 amino acid motif, the F-box. The F-box proteins constitute one of the four subunits of ubiquitin protein ligase complex called SCFs (SKP1-cullin-F-box), which function in phosphorylation-dependent ubiquitination. The F-box proteins are divided into 3 classes: Fbws containing WD-40 domains, Fbls containing leucine-rich repeats, and Fbxs containing either different protein-protein interaction modules or no recognizable motifs. The protein encoded by this gene was previously referred to as FBX30, and belongs to the Fbws class; in addition to an F-box, this protein contains 7 tandem WD40 repeats. This protein binds directly to cyclin E and probably targets cyclin E for ubiquitin-mediated degradation. Mutations in this gene are detected in ovarian and breast cancer cell lines, implicating the gene's potential role in the pathogenesis of human cancers. Multiple transcript variants encoding different isoforms have been found for this gene. [provided by RefSeq, Mar 2012]</p>
Molecular Mass	88.7 kDa
AA Sequence	MGFYGTLKMIFYKMKRKLHDHGSEVRSFSLGKKPCKVSEYTSTTGLVPCSATPTTFG

 Tel: 1-631-559-9269 1-516-512-3133

 Email: info@creative-biomart.com  Fax: 1-631-938-8127

 45-1 Ramsey Road, Shirley, NY 11967, USA

DLRAANGQGQRRRITSVQPPTGLQEWLKMFQSWSGPEKLLALDELIDSCEPTQVK
HMMQVIEPQFQRDFISLLPKELALYVLSFLEPKDLLQAAQTCRYWRILAEDNLLWRE
KCKEEGIDEPLHIKRRKVIKPGFIHSPWKSAYIRQHRIDTNWRRGELKSPKVLKGHDD
HVITCLQFCGNRIVSGSDDNTLVVWSAVTGKCLRTL VGHTGGVWSSQMRDNIISGS
TDRTLKVWNAETGECIHTLYGHTSTVRCMHLHEKRVVSGSRDATLRVWDIETGQCL
HVLMGHVAAVRCVQYDGRRVVSGAYDFMVKVWDPETETCLHTLQGHTNRVYSLQ
FDGIHVVSGSLDTSIRVWDVETGNCIHTLTGHQSLTSGMELKDNILVSGNADSTVKIW
DIKTGQCLQTLQGPNKHQSAVTCLQFNKNFVITSSDDGTVKLWDLKTGEFIRNLVTL
ESGGSGGVVWRIRASNTKLVCAVGSRRNGTEETKLLVLDLDFVDMK

Applications
Enzyme-linked Immunoabsorbent Assay
Western Blot (Recombinant protein)
Antibody Production
Protein Array

Notes
Best use within three months from the date of receipt of this protein.

Storage
Store at -80 centigrade. Aliquot to avoid repeated freezing and thawing.

Storage Buffer
50 mM Tris-HCl, 10 mM reduced Glutathione, pH=8.0 in the elution buffer.

GENE INFORMATION

Gene Name
FBXW7 F-box and WD repeat domain containing 7, E3 ubiquitin protein ligase [Homo sapiens]

Official Symbol
FBXW7

Synonyms
FBXW7; F-box and WD repeat domain containing 7, E3 ubiquitin protein ligase; F box and WD repeat domain containing 7 , F box and WD 40 domain protein 7 (archipelago homolog, Drosophila); F-box/WD repeat-containing protein 7; AGO;

 Tel: 1-631-559-9269 1-516-512-3133

 Email: info@creative-biomart.com  Fax: 1-631-938-8127

 45-1 Ramsey Road, Shirley, NY 11967, USA

archipelago homolog (Drosophila); CDC4; FBW7; FBX30; FBXW6; FLJ11071; SEL10; SEL10; archipelago; F-box protein FBW7; F-box protein FBX30; F-box protein SEL-10; homolog of C elegans sel-10; F-box and WD-40 domain protein 7 (archipelago homolog, Drosophila); FBW6; hAgo; hCdc4; FBXO30; SEL-10; FLJ16457; DKFZp686F23254;

Gene ID [55294](#)

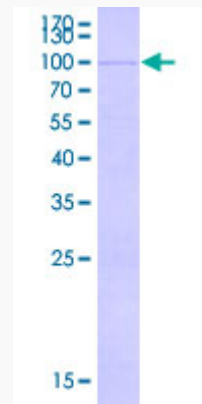
mRNA Refseq [NM_001013415](#)

Protein Refseq [NP_001013433](#)


MIM [606278](#)

UniProt ID [Q969H0](#)

**Quality Control
Testing**



12.5% SDS-PAGE Stained with Coomassie Blue

 Tel: 1-631-559-9269 1-516-512-3133

 Email: info@creative-biomart.com  Fax: 1-631-938-8127

 45-1 Ramsey Road, Shirley, NY 11967, USA