

Recombinant Human FCER1A Protein, His-SUMO-tagged

Cat. No. FCER1A-1209H Lot. No. (See product label)

SPECIFICATION

Product Overview	Recombinant Human FCER1A Protein (26-205aa) was expressed in E. coli with N-terminal His-SUMO-tag.
Species	Human
Source	E.coli
ProteinLength	26-205 a.a.
Form	Tris-based buffer, 50% glycerol.
Molecular Mass	37.0 kDa
AA Sequence	VPQKPKVSLNPPWNRIFKGENVTLCNGNFFFEVSSTKWFHNGSLSEETNSSLNIV NAKFEDSGEYKCQH QQVNESEPVYLEVFSDWLLLQASAEVVMEGQPLFLRCHGWRNWDVYKVIYYKDGE ALKYWYENHNISITN ATVEDSGTYCTGKVVQLDYESEPLNITVIKAPREKYWLQ
Purity	Greater than 90% as determined by SDS-PAGE.
Storage	The shelf life of liquid form is 6 months at -20 centigrade/-80 centigrade. The shelf life of lyophilized form is 12 months at -20 centigrade/-80 centigrade.

GENE INFORMATION

 Tel: 1-631-559-9269 1-516-512-3133

 Email: info@creative-biomart.com  Fax: 1-631-938-8127

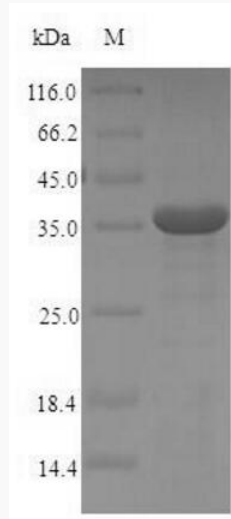
 45-1 Ramsey Road, Shirley, NY 11967, USA

Gene Name	FCER1A Fc fragment of IgE, high affinity I, receptor for; alpha polypeptide [Homo sapiens]
Official Symbol	FCER1A
Synonyms	FCER1A; Fc fragment of IgE, high affinity I, receptor for; alpha polypeptide; FCE1A; high affinity immunoglobulin epsilon receptor subunit alpha; Fc-epsilon RI-alpha; Fc epsilon RI alpha-chain; igE Fc receptor subunit alpha; Fc IgE receptor, alpha polypeptide; high affinity immunoglobulin epsilon receptor alpha-subunit; immunoglobulin E receptor, high-affinity, of mast cells, alpha polypeptide; FcERI
Gene ID	2205
mRNA Refseq	NM_002001
Protein Refseq	NP_001992
MIM	147140
UniProt ID	P12319

 Tel: 1-631-559-9269 1-516-512-3133

 Email: info@creative-biomart.com  Fax: 1-631-938-8127

 45-1 Ramsey Road, Shirley, NY 11967, USA



Tel: 1-631-559-9269 1-516-512-3133

Email: info@creative-biomart.com Fax: 1-631-938-8127

45-1 Ramsey Road, Shirley, NY 11967, USA