

Recombinant Human FCER1A Protein (26-205 aa), His-tagged

Cat. No. FCER1A-2099H **Lot. No.** (See product label)

SPECIFICATION

Product Overview	Recombinant Human FCER1A Protein (26-205 aa) is produced by Yeast expression system. This protein is fused with a 6xHis tag at the N-terminal. Research Area: Immunology. Protein Description: Partial.
Species	Human
Source	Yeast
ProteinLength	26-205 aa
Description	Binds to the Fc region of immunoglobulins epsilon. High affinity receptor. Responsible for initiating the allergic response. Binding of allergen to receptor-bound IgE leads to cell activation and the release of mediators (such as histamine) responsible for the manifestations of allergy. The same receptor also induces the secretion of important lymphokines.
Form	Tris-based buffer,50% glycerol
Molecular Mass	23.0 kDa
AA Sequence	VPQKPKVSLNPPWNRIFKGENVTLCNGNFFFEVSSTKWFHNGSLSEETNSSLNIV NAKFEDSGEYKQCQHQQVNESEPVYLEVFSDWLLLQASAEVVMEGQPLFLRCHGWR NWDVYKVIYYKDGEALKYWYENHNISITNATVEDSGTYCTGKVVQLDYESEPLNIT VIKAPREKYWLQ

 Tel: 1-631-559-9269 1-516-512-3133

 Email: info@creative-biomart.com  Fax: 1-631-938-8127

 45-1 Ramsey Road, Shirley, NY 11967, USA

Purity	> 90% as determined by SDS-PAGE.
Notes	Repeated freezing and thawing is not recommended. Store working aliquots at 4 centigrade for up to one week.
Storage	The shelf life is related to many factors, storage state, buffer ingredients, storage temperature and the stability of the protein itself. Generally, the shelf life of liquid form is 6 months at -20 centigrade/-80 centigrade. The shelf life of lyophilized form is 12 months at -20 centigrade/-80 centigrade.
Concentration	A hardcopy of COA with reconstitution instruction is sent along with the products.

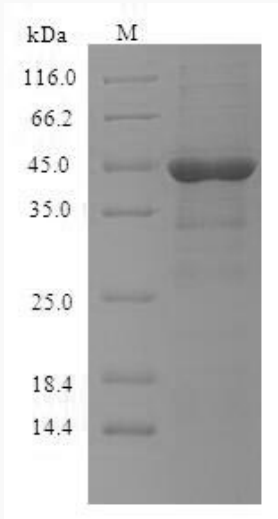
GENE INFORMATION

Gene Name	FCER1A Fc fragment of IgE, high affinity I, receptor for; alpha polypeptide [Homo sapiens]
Official Symbol	FCER1A
Synonyms	FCER1A; alpha polypeptide; FCE1A; Fc-epsilon RI-alpha; FcERI;
Gene ID	2205
mRNA Refseq	NM_002001
Protein Refseq	NP_001992
MIM	147140
UniProt ID	P12319

 Tel: 1-631-559-9269 1-516-512-3133

 Email: info@creative-biomart.com  Fax: 1-631-938-8127

 45-1 Ramsey Road, Shirley, NY 11967, USA



(Tris-Glycine gel) Discontinuous SDS-PAGE (reduced) with 5% enrichment gel and 15% separation gel.

 Tel: 1-631-559-9269 1-516-512-3133

 Email: info@creative-biomart.com  Fax: 1-631-938-8127

 45-1 Ramsey Road, Shirley, NY 11967, USA