

# Recombinant Rat Fc epsilon receptor Ia Protein, His tagged

**Cat. No.** FCER1A-2304R    **Lot. No.** (See product label)

## SPECIFICATION

<b>Product Overview</b>	Recombinant Rat FCER1A Protein with His tag was expressed in HEK293F.
<b>Species</b>	Rat
<b>Source</b>	HEK293
<b>ProteinLength</b>	24-200 aa
<b>Description</b>	<p>Predicted to enable IgE binding activity and high-affinity IgE receptor activity. Predicted to be involved in several processes, including eosinophil degranulation; type 2 immune response; and type I hypersensitivity. Predicted to act upstream of or within several processes, including leukotriene biosynthetic process; positive regulation of immune effector process; and positive regulation of macromolecule metabolic process. Predicted to be located in cell surface and plasma membrane. Predicted to be active in external side of plasma membrane. Orthologous to human FCER1A (Fc epsilon receptor Ia).</p>
<b>Tag</b>	C-His
<b>Molecular Mass</b>	23 kDa
<b>AA Sequence</b>	<p>MDTGGSARLCLALVLISLGVMLTATQKSVVSLDPPWIRILTGDKVTLICNGNNSQMN            STKWIHNDSISNVKSSHWVIVSATIQDSGKYICQKQGFYKSKPVYLNVMQEWLLLQS            SADVVLNNGSFDIRCRSWKKWKVHKVIYYKDDIAFKYSYDSNNISIRKATFNDSGSY            HCTGYLNKVECKSDKFSIAVVKDYTIEYHHHHHHHH</p>

 Tel: 1-631-559-9269    1-516-512-3133

 Email: [info@creative-biomart.com](mailto:info@creative-biomart.com)     Fax: 1-631-938-8127

 45-1 Ramsey Road, Shirley, NY 11967, USA

<b>Endotoxin</b>	< 1 EU/μg by LAL
<b>Purity</b>	> 80% by SDS-PAGE
<b>Storage</b>	Store it under sterile conditions at -80 centigrade. Avoid repeated freeze-thaw cycles.
<b>Storage Buffer</b>	Liquid in 25 mM Tris-Hcl, pH7.4, 150 mM NaCl, 0.05% DDM
<b>Concentration</b>	0.5 mg/mL

## GENE INFORMATION

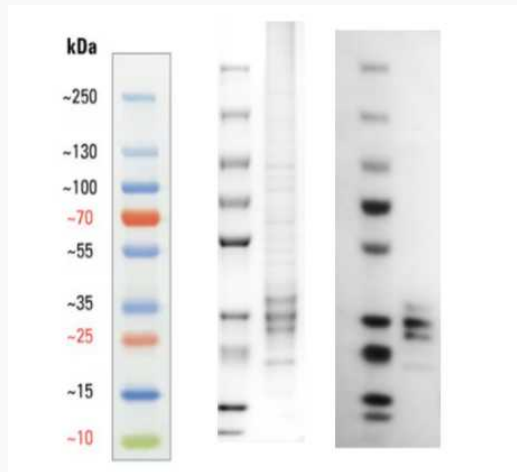
<b>Gene Name</b>	Fcer1a Fc epsilon receptor Ia [ Rattus norvegicus (Norway rat) ]
<b>Official Symbol</b>	FCER1A
<b>Synonyms</b>	FCER1A; Fc fragment of IgE, high affinity I, receptor for; alpha polypeptide; high affinity immunoglobulin epsilon receptor subunit alpha; fcERI; alpha polypeptide; fc-epsilon RI-alpha; igE Fc receptor subunit alpha; Fc receptor, IgE, high affinity I, alpha polypeptide; Iger01; RATIGER01
<b>Gene ID</b>	25047
<b>mRNA Refseq</b>	NM_012724
<b>Protein Refseq</b>	NP_036856
<b>UniProt ID</b>	P12371

 Tel: 1-631-559-9269 1-516-512-3133

 Email: [info@creative-biomart.com](mailto:info@creative-biomart.com)  Fax: 1-631-938-8127

 45-1 Ramsey Road, Shirley, NY 11967, USA

**Protein ladder labels  
and Reducing 4%-  
20% SDS-PAGE  
(CBB stained) and  
WB (Anti-His Mouse  
Monoclonal  
antibody) analysis  
profiles of purified  
FcER1A 24-200aa.**



 Tel: 1-631-559-9269 1-516-512-3133

 Email: [info@creative-biomart.com](mailto:info@creative-biomart.com)  Fax: 1-631-938-8127

 45-1 Ramsey Road, Shirley, NY 11967, USA