

Recombinant Mouse FCER1A Full Length Transmembrane protein (24-250 aa), His-SUMO-tagged

Cat. No. FCER1A-2710M Lot. No. (See product label)

SPECIFICATION

Product Overview	Recombinant Mouse FCER1A Protein (24-250 aa) is produced by in vitro E. coli expression system. This protein is fused with a 10xHis-SUMO tag at the N-terminal.
Species	Mouse
Source	E.coli
ProteinLength	24-250aa
Form	If the delivery form is liquid, the default storage buffer is Tris/PBS-based buffer, 5%-50% glycerol. If the delivery form is lyophilized powder, the buffer before lyophilization is Tris/PBS-based buffer, 6% Trehalose, pH 8.0.
Molecular Mass	44.7kDa
AA Sequence	ATEKSVLTLDPPWIRIFTGEKVTLSYGNHLMNSTTKWIHNGTVSEVNSSHLVIVS ATVQDSGKYICQKQGLFKSKPVYLNVTQDWLLQLQTSADMVLVHGSFDIRCHGWKN WNVRKVIYYRNDHAFNYSYESPVSIREATLNDSGTYHCKGYLRQVKYESDKFRIAVV KAYKCKYYWLQLIFLLVAILFAVDTGLLLSTEEQFKSVLEIQKTGKYKKVETELLT
Purity	Greater than 90% as determined by SDS-PAGE.
Storage	Store at -20°C/-80°C upon receipt, aliquoting is necessary for mutiple use. Avoid

 Tel: 1-631-559-9269 1-516-512-3133

 Email: info@creative-biomart.com  Fax: 1-631-938-8127

 45-1 Ramsey Road, Shirley, NY 11967, USA

repeated freeze-thaw cycles.

Reconstitution

Please reconstitute protein in deionized sterile water to a concentration of 0.1-1.0 mg/mL. We recommend to add 5-50% of glycerol (final concentration) and aliquot for long-term storage at -20°C/-80°C. Our default final concentration of glycerol is 50%.

GENE INFORMATION**Gene Name**

Fcεr1a Fc receptor, IgE, high affinity I, alpha polypeptide [*Mus musculus*]

Official Symbol

FCER1A

Synonyms

FCER1A; Fc receptor, IgE, high affinity I, alpha polypeptide; high affinity immunoglobulin epsilon receptor subunit alpha; fc-epsilon RI-alpha; igE Fc receptor subunit alpha; FcERI; Fce1a; Fcr-5; fcepsilonri;

Gene ID

14125

mRNA Refseq

NM_010184

Protein Refseq

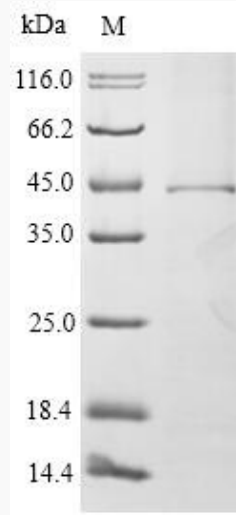
NP_034314

 Tel: 1-631-559-9269 1-516-512-3133

 Email: info@creative-biomart.com  Fax: 1-631-938-8127

 45-1 Ramsey Road, Shirley, NY 11967, USA

SDS-PAGE



 Tel: 1-631-559-9269 1-516-512-3133

 Email: info@creative-biomart.com  Fax: 1-631-938-8127

 45-1 Ramsey Road, Shirley, NY 11967, USA