

Recombinant Human FCER1A Protein(Val26-Gln205), His-tagged

Cat. No. FCER1A-338H **Lot. No.** (See product label)

SPECIFICATION

| | |
|-------------------------|---|
| Product Overview | Recombinant Human FCER1A Protein(Val26-Gln205)(P12319-1), fused with C-terminal His Tag, was expressed in HEK293. |
| Species | Human |
| Source | HEK293 |
| ProteinLength | Val26-Gln205 |
| Form | Lyophilized from 0.22µm filtered solution in PBS (pH 7.4). Normally 8% trehalose is added as protectant before lyophilization. |
| Bio-activity | Immobilized Human Fc epsilon RI alpha, His Tag at 0.2µg/ml (100µl/well) on the plate. Dose response curve for Anti-Fc epsilon RI alpha Antibody, hFc Tag with the EC50 of 4.0ng/ml determined by ELISA. |
| Molecular Mass | The protein has a predicted MW of 22.1 kDa. Due to glycosylation, the protein migrates to 48-65 kDa based on Tris-Bis PAGE result. |
| Endotoxin | Less than 1EU per ug by the LAL method. |
| Purity | > 95% as determined by Tris-Bis PAGE > 95% as determined by HPLC |

 Tel: 1-631-559-9269 1-516-512-3133

 Email: info@creative-biomart.com  Fax: 1-631-938-8127

 45-1 Ramsey Road, Shirley, NY 11967, USA

Storage

-20 to -80°C for 12 months as supplied from date of receipt.
 -80°C for 3-6 months after reconstitution.
 2-8°C for 2-7 days after reconstitution.
 Recommend to aliquot the protein into smaller quantities for optimal storage. Please minimize freeze-thaw cycles.

Reconstitution

Centrifuge the tube before opening. Reconstituting to a concentration more than 100 µg/ml is recommended. Dissolve the lyophilized protein in distilled water.

GENE INFORMATION

Gene Name [FCER1A Fc fragment of IgE, high affinity I, receptor for; alpha polypeptide \[Homo sapiens \]](#)

Official Symbol [FCER1A](#)

Synonyms FCER1A; Fc fragment of IgE, high affinity I, receptor for; alpha polypeptide; FCE1A; high affinity immunoglobulin epsilon receptor subunit alpha; Fc-epsilon RI-alpha; Fc epsilon RI alpha-chain; igE Fc receptor subunit alpha; Fc IgE receptor, alpha polypeptide; high affinity immunoglobulin epsilon receptor alpha-subunit; immunoglobulin E receptor, high-affinity, of mast cells, alpha polypeptide; FcERI;

Gene ID [2205](#)

mRNA Refseq [NM_002001](#)

Protein Refseq [NP_001992](#)

MIM [147140](#)

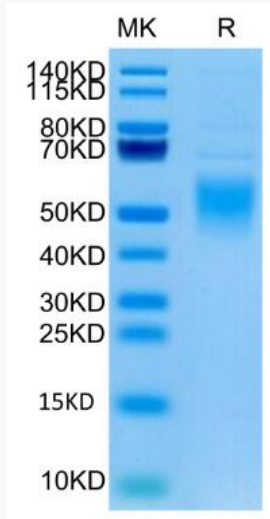
UniProt ID [P12319](#)

 Tel: 1-631-559-9269 1-516-512-3133

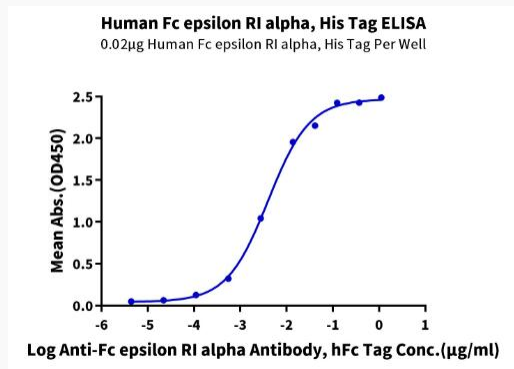
 Email: info@creative-biomart.com  Fax: 1-631-938-8127

 45-1 Ramsey Road, Shirley, NY 11967, USA

Tris-Bis PAGE



Activity



 Tel: 1-631-559-9269 1-516-512-3133

 Email: info@creative-biomart.com  Fax: 1-631-938-8127

 45-1 Ramsey Road, Shirley, NY 11967, USA