

## Recombinant Human FCER1A protein, hFc-tagged

Cat. No. FCER1A-5467H Lot. No. (See product label)

### SPECIFICATION

<b>Product Overview</b>	Recombinant Human FCER1A protein(P12319-1)(Val26-Gln205), fused with C-terminal hFc tag, was expressed in HEK293.
<b>Species</b>	Human
<b>Source</b>	HEK293
<b>ProteinLength</b>	Val26-Gln205
<b>Tag</b>	C-hFc
<b>Form</b>	Lyophilized from 0.22µm filtered solution in PBS (pH 7.4). Normally 8% trehalose is added as protectant before lyophilization.
<b>Bio-activity</b>	Immobilized Human Fc epsilon RI alpha, hFc Tag at 0.5ug/ml (100ul/Well) on the plate. Dose response curve for Biotinylated Anti-Fc epsilon RI alpha Antibody, hFc Tag with the EC50 14.5ng/ml determined by ELISA.
<b>Molecular Mass</b>	The protein has a predicted MW of 47.8 kDa. Due to glycosylation, the protein migrates to 70-78 kDa based on Tris-Bis PAGE result.
<b>Endotoxin</b>	Less than 1EU per µg by the LAL method.
<b>Purity</b>	> 95% as determined by Tris-Bis PAGE;> 95% as determined by HPLC

 Tel: 1-631-559-9269 1-516-512-3133

 Email: [info@creative-biomart.com](mailto:info@creative-biomart.com)  Fax: 1-631-938-8127

 45-1 Ramsey Road, Shirley, NY 11967, USA

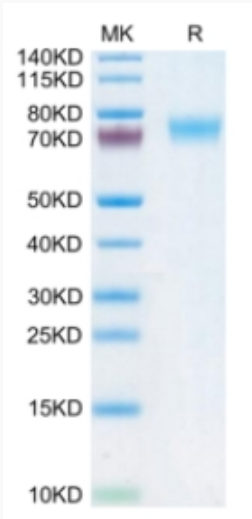
<b>Storage</b>	Reconstituted protein stable at -80°C for 12 months, 4°C for 1 week. Use a manual defrost freezer and avoid repeated freeze-thaw cycles.
<b>Reconstitution</b>	Centrifuge tubes before opening. Reconstituting to a concentration more than 100 µg/ml is recommended. Dissolve the lyophilized protein in distilled water.
<b>GENE INFORMATION</b>	
<b>Gene Name</b>	FCER1A Fc fragment of IgE, high affinity I, receptor for; alpha polypeptide [ Homo sapiens ]
<b>Official Symbol</b>	FCER1A
<b>Synonyms</b>	FCER1A; Fc fragment of IgE, high affinity I, receptor for; alpha polypeptide; FCE1A; high affinity immunoglobulin epsilon receptor subunit alpha; Fc-epsilon RI-alpha; Fc epsilon RI alpha-chain; igE Fc receptor subunit alpha; Fc IgE receptor, alpha polypeptide; high affinity immunoglobulin epsilon receptor alpha-subunit; immunoglobulin E receptor, high-affinity, of mast cells, alpha polypeptide; FcERI;
<b>Gene ID</b>	2205
<b>mRNA Refseq</b>	NM_002001
<b>Protein Refseq</b>	NP_001992
<b>MIM</b>	147140
<b>UniProt ID</b>	P12319

 Tel: 1-631-559-9269 1-516-512-3133

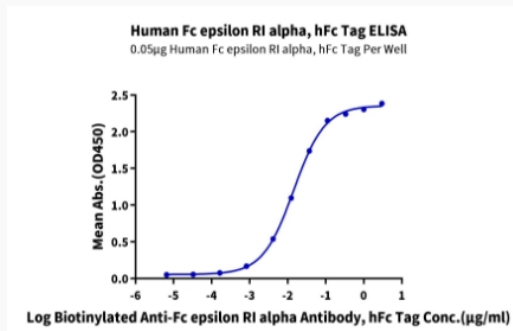
 Email: [info@creative-biomart.com](mailto:info@creative-biomart.com)  Fax: 1-631-938-8127

 45-1 Ramsey Road, Shirley, NY 11967, USA

**Tris-Bis PAGE**



**ELISA Data**



 Tel: 1-631-559-9269 1-516-512-3133

 Email: [info@creative-biomart.com](mailto:info@creative-biomart.com)  Fax: 1-631-938-8127

 45-1 Ramsey Road, Shirley, NY 11967, USA