

Recombinant Human FCER2 Protein (Asp48-Ser321), N-His tagged

Cat. No. FCER2-1257H Lot. No. (See product label)

SPECIFICATION

Product Overview	Recombinant Human CD23/FCER2 (Asp48-Ser321) fused with the N-His tag was expressed in E. coli.
Species	Human
Source	E.coli
ProteinLength	Asp48-Ser321
Form	Lyophilized powder/frozen liquid
Molecular Mass	33.30 kDa
Purity	>90% as determined by SDS-PAGE.
Notes	For research use only.
Storage	Use a manual defrost freezer and avoid repeated freeze thaw cycles. Store at 2 to 8 centigrade for one week. Store at -20 to -80 centigrade for twelve months from the date of receipt.
Storage Buffer	0.01M PBS, pH 7.4, 0.02% NLS
Reconstitution	Reconstitute in sterile water for a stock solution.

 Tel: 1-631-559-9269 1-516-512-3133

 Email: info@creative-biomart.com  Fax: 1-631-938-8127

 45-1 Ramsey Road, Shirley, NY 11967, USA

Shipping They are shipped out with dry ice/blue ice unless customers require otherwise.

GENE INFORMATION

Gene Name FCER2 Fc fragment of IgE, low affinity II, receptor for (CD23) [Homo sapiens (human)]

Official Symbol FCER2

Synonyms FCER2; Fc fragment of IgE, low affinity II, receptor for (CD23); CD23A, Fc fragment of IgE, low affinity II, receptor for (CD23A), FCE2; low affinity immunoglobulin epsilon Fc receptor; CD23; CLEC4J; BLAST-2; CD23 antigen; fc-epsilon-RII; lymphocyte IgE receptor; immunoglobulin E-binding factor; C-type lectin domain family 4, member J; FCE2; CD23A; IGEBF;

Gene ID 2208

mRNA Refseq NM_001207019

Protein Refseq NP_001193948

MIM 151445

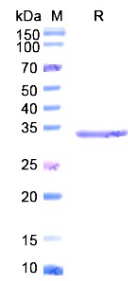
UniProt ID P06734

 Tel: 1-631-559-9269 1-516-512-3133

 Email: info@creative-biomart.com  Fax: 1-631-938-8127

 45-1 Ramsey Road, Shirley, NY 11967, USA

SDS-PAGE



 Tel: 1-631-559-9269 1-516-512-3133

 Email: info@creative-biomart.com  Fax: 1-631-938-8127

 45-1 Ramsey Road, Shirley, NY 11967, USA