

Recombinant Human FCER2 Protein (Asp48-Ser321), N-His tagged

Cat. No. FCER2-2929H Lot. No. (See product label)

SPECIFICATION

Product Overview	Recombinant human FCER2 (Asp48-Ser321) protein fused with the N-terminusHis tag was expressed in Mammalian cells.
Species	Human
Source	Mammalian Cells
ProteinLength	Asp48-Ser321
Molecular Mass	30.14 kDa
Purity	>90 % as determined by SDS-PAGE.
Notes	For research use only.
Storage	Use a manual defrost freezer and avoid repeated freeze thaw cycles. Store at 2 to 8 centigrade for one week. Store at -20 to -80 centigrade for twelve months from the date of receipt.
Storage Buffer	Supplied as solution form in PBS or lyophilized from PBS.
Reconstitution	Reconstitute in sterile water for a stock solution.
Shipping	In general, proteins are provided as lyophilized powder/frozen liquid. They are

 Tel: 1-631-559-9269 1-516-512-3133

 Email: info@creative-biomart.com  Fax: 1-631-938-8127

 45-1 Ramsey Road, Shirley, NY 11967, USA

shipped out with dry ice/blue ice unless customers require otherwise.

GENE INFORMATION

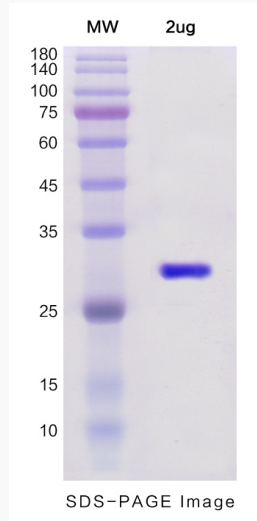
Gene Name	FCER2 Fc fragment of IgE, low affinity II, receptor for (CD23) [Homo sapiens (human)]
Official Symbol	FCER2
Synonyms	FCER2; Fc fragment of IgE, low affinity II, receptor for (CD23); CD23A, Fc fragment of IgE, low affinity II, receptor for (CD23A), FCE2; low affinity immunoglobulin epsilon Fc receptor; CD23; CLEC4J; BLAST-2; CD23 antigen; fc-epsilon-RII; lymphocyte IgE receptor; immunoglobulin E-binding factor; C-type lectin domain family 4, member J; FCE2; CD23A; IGEBF;
Gene ID	2208
mRNA Refseq	NM_001207019
Protein Refseq	NP_001193948
MIM	151445
UniProt ID	P06734

 Tel: 1-631-559-9269 1-516-512-3133

 Email: info@creative-biomart.com  Fax: 1-631-938-8127

 45-1 Ramsey Road, Shirley, NY 11967, USA

SDS-PAGE



 Tel: 1-631-559-9269 1-516-512-3133

 Email: info@creative-biomart.com  Fax: 1-631-938-8127

 45-1 Ramsey Road, Shirley, NY 11967, USA