

Recombinant Human FCER2 Protein, GST-tagged

Cat. No. FCER2-3985H Lot. No. (See product label)

SPECIFICATION

Product Overview	Human FCER2 full-length ORF (AAH14108, 1 a.a. - 321 a.a.) recombinant protein with GST-tag at N-terminal.
Species	Human
Source	Wheat Germ
Description	The protein encoded by this gene is a B-cell specific antigen, and a low-affinity receptor for IgE. It has essential roles in B cell growth and differentiation, and the regulation of IgE production. This protein also exists as a soluble secreted form, then functioning as a potent mitogenic growth factor. Alternatively spliced transcript variants encoding different isoforms have been described for this gene.[provided by RefSeq, Jul 2011]
Molecular Mass	61.05 kDa
AA Sequence	MEEGQYSEIEELPRRRCCRRGTQIVLLGLVTAALWAGLLTLLLLWHWDTTQGLKQLE ERAARNVSQVSKNLESHHGDMQAQKSQSTQISQELEELRAEQRLKSQDLELSWN LNGLQADLSSFKSQELNERNEASDLLERLREEVTKLRMELQVSSGFVNCNTCPEKWI NFQRKCYFYGKGTKQWVHARYACDDMEGQLVSIHSPEEQDFLTKHASHTGSWIGL RNLDLKGEFIWVDGSHVDYSNWAPGEPTSRSQGEDCVMMRGSGRWNDAFCDRKL GAWVCDRLATCTPPASEGSAESMGPDSRPDPDGRLLPTPSAPLHS
Applications	Enzyme-linked Immunoabsorbent Assay Western Blot (Recombinant protein)

 Tel: 1-631-559-9269 1-516-512-3133

 Email: info@creative-biomart.com  Fax: 1-631-938-8127

 45-1 Ramsey Road, Shirley, NY 11967, USA

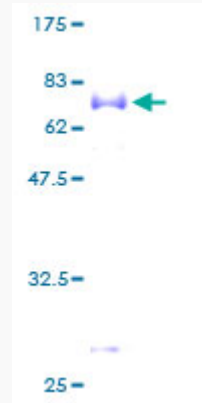
	Antibody Production Protein Array
Notes	Best use within three months from the date of receipt of this protein.
Storage	Store at -80 centigrade. Aliquot to avoid repeated freezing and thawing.
Storage Buffer	50 mM Tris-HCl, 10 mM reduced Glutathione, pH=8.0 in the elution buffer.
GENE INFORMATION	
Gene Name	FCER2 Fc fragment of IgE, low affinity II, receptor for (CD23) [Homo sapiens]
Official Symbol	FCER2
Synonyms	FCER2; Fc fragment of IgE, low affinity II, receptor for (CD23); CD23A, Fc fragment of IgE, low affinity II, receptor for (CD23A) , FCE2; low affinity immunoglobulin epsilon Fc receptor; CD23; CLEC4J; BLAST-2; CD23 antigen; fc-epsilon-RII; lymphocyte IgE receptor; immunoglobulin E-binding factor; C-type lectin domain family 4, member J; FCE2; CD23A; IGEBF;
Gene ID	2208
mRNA Refseq	NM_001207019
Protein Refseq	NP_001193948
MIM	151445
UniProt ID	P06734

 Tel: 1-631-559-9269 1-516-512-3133

 Email: info@creative-biomart.com  Fax: 1-631-938-8127

 45-1 Ramsey Road, Shirley, NY 11967, USA

**Quality Control
Testing**



12.5% SDS-PAGE Stained with Coomassie Blue.

 Tel: 1-631-559-9269 1-516-512-3133

 Email: info@creative-biomart.com  Fax: 1-631-938-8127

 45-1 Ramsey Road, Shirley, NY 11967, USA